

15  
SECTION

20  
TOWN

07  
RANGE

# ADAMS COUNTY

COUNTY CORNER NO: 69  
ROMPORTOL ID: 42007150000

## PUBLIC LAND SURVEY MONUMENT RECORD

TYPE OF MONUMENT: HARRISON  
ADAMS COUNTY COORDINATES, NAD 83 (2007)

N. 303689.647

E. 578036.304

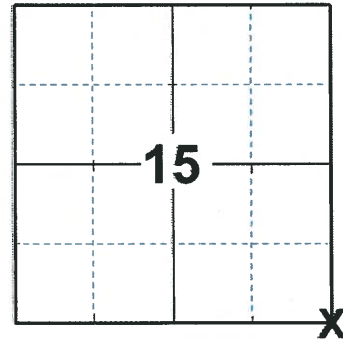
ELEVATION-      DATUM     

FIELD WORK DATE: 03/09/2020

### BASIS FOR MONUMENT LOCATION

1983 - PLS 1444 THIS CORNER WAS SET BY DOUBLE PROPORTIONATE MEASURE. NO EXCAVATION WAS DONE HERE BECAUSE IT APPEARS THAT DITCHING THAT HAD BEEN DONE WOULD OF DESTROYED ANY EVIDENCE OF ANY PREVIOUS CORNERS.

2020 - PLS 2675 FOUND HARRISON 2"± BELOW THE GROUND AND 4 TIES. THE MONUMENT AGREES WITH ALL 4 TIES. ACCEPTED THE HARRISON AS THE CORNER LOCATION AND MEASURED TO THE EXISTING TIES.



LOCATION

(INDICATE CORNER BY "X")

SEAL:



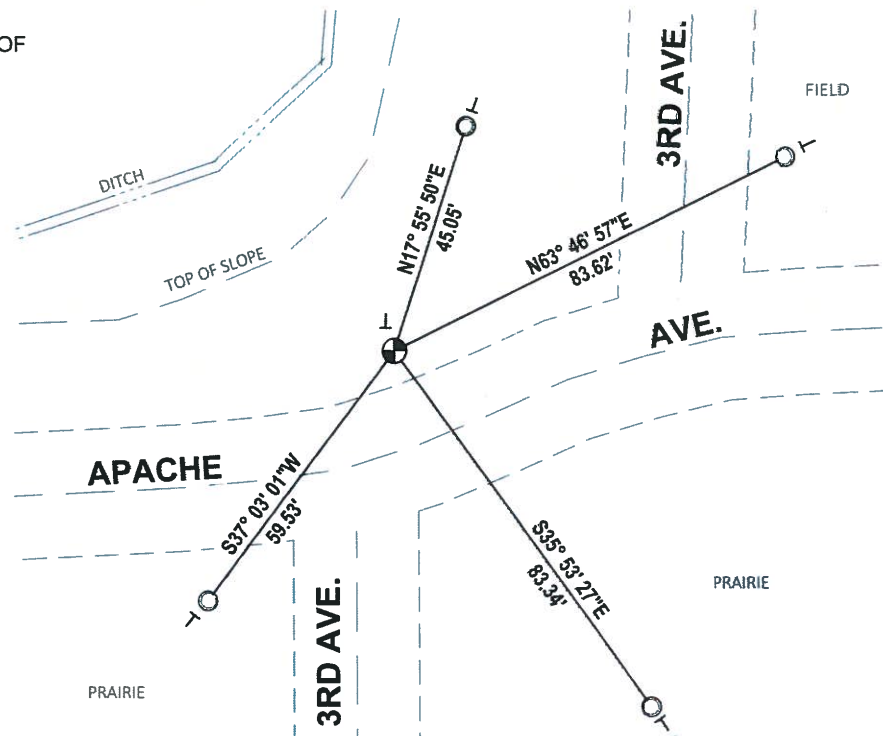
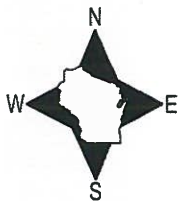
DATA SHOWN HERE ON THIS TIE SHEET IS CORRECT AND COMPLETE TO THE BEST OF MY KNOWLEDGE AND BELIEF.

PROFESSIONAL LAND SURVEYOR

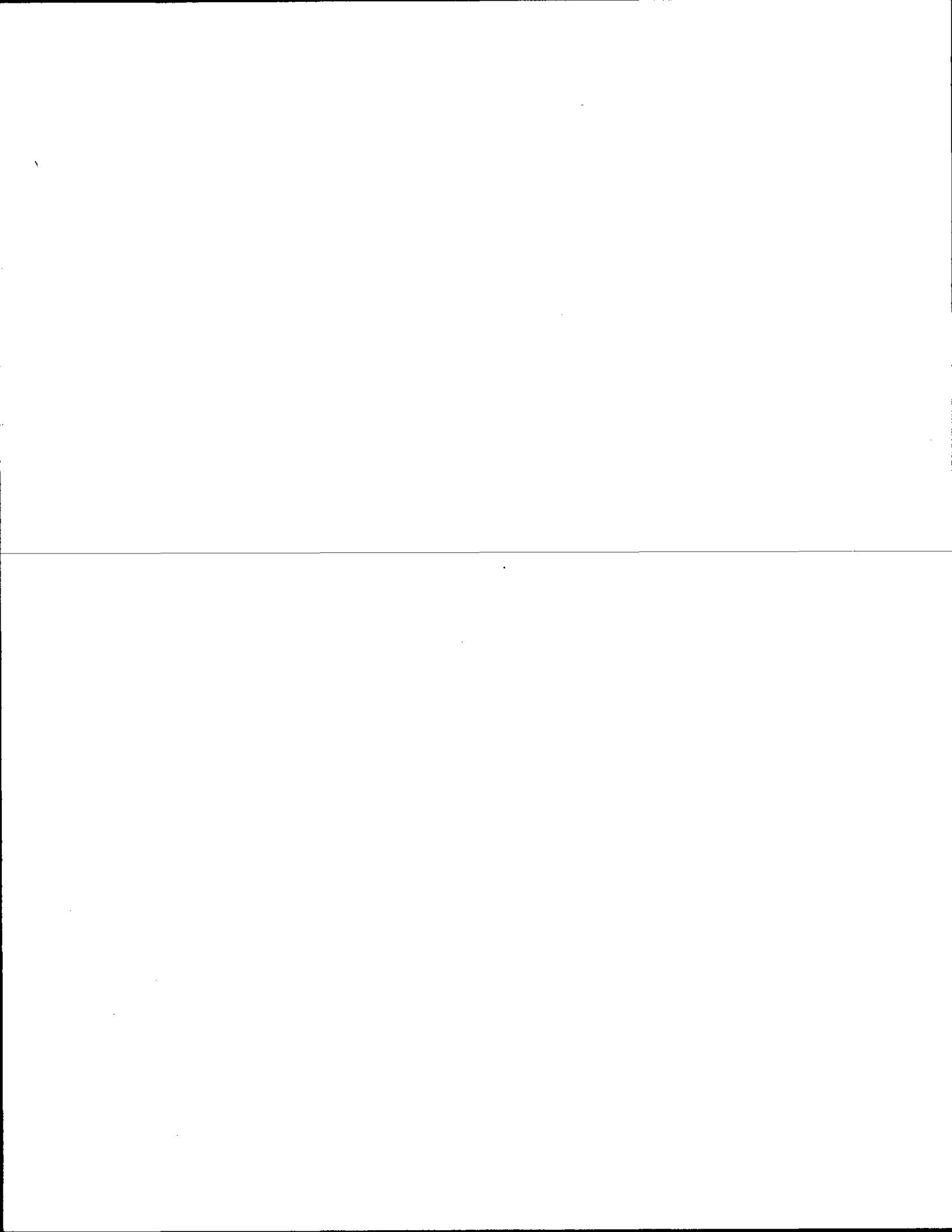
DATE 3/25/2020

### TIE SKETCH

NOTE: THE CORNER LANDS 19.6'± NORTH OF APACHE AVE. CENTERLINE.



- FOUND 1-1/4" O.D. IRON PIPE
- ⊕ FOUND HARRISON MONUMENT
- ⊥ VINYL "T" POST



# Government Land Corner Certificate

**ADAMS**

County

TYPE OF MONUMENT: **HARRISON**

STATE PLANE COORDINATES: N \_\_\_\_\_  
E \_\_\_\_\_

ELEVATION — M.S.L. DATUM: \_\_\_\_\_

THETA ANGLE: \_\_\_\_\_

FIELD BOOK: 91 PAGE 65

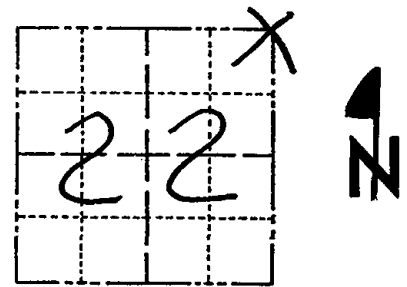
DRAWN BY: S.J.H.

CORNER NO. 69

SECTION 22

TOWN 20

RANGE 7



LOCATION  
(Indicated by 'X')

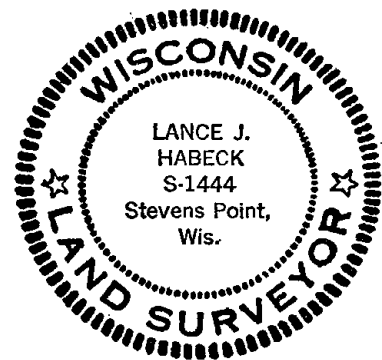
## BASIS FOR MONUMENT LOCATION

Show info such as: History of corner, with reference to Vol. and pg., dates, surveyor; exact description of monument replaced; if location computed, by taped or EDM traverse; landowner remarks, etc. (Use reverse side if necessary)

This corner was set by double proportionate measure. No excavation was done here because it appears that ditching that had been done would have destroyed any evidence of any previous corners.

Ok 4-30-84 SS-DK

SEAL:



DATA SHOWN HERE ON  
CERTIFIED CORRECT:

*Lance J. Habeck*  
Registered Land Surveyor

DATE: 4/29/83

## TIE SKETCH

Show at least four ties, also fence lines, roads, topo, size and type of witness trees and if off road - best way to arrive at corner.

NOTE: ALL TIES TO  
1" x 24" IRON PIPES

