

13 SECTION 20 TOWN 07 RANGE

ADAMS COUNTY

COUNTY CORNER NO: 73
ROMPORTOL ID: 42007130000

PUBLIC LAND SURVEY MONUMENT RECORD

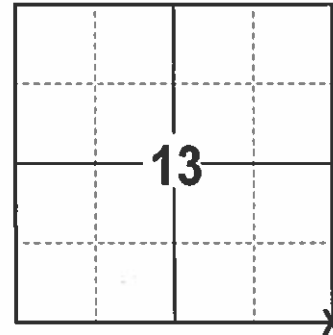
TYPE OF MONUMENT: HARRISON
ADAMS COUNTY COORDINATES, NAD 83 (2007)

N. 303867.446

E. 588610.971

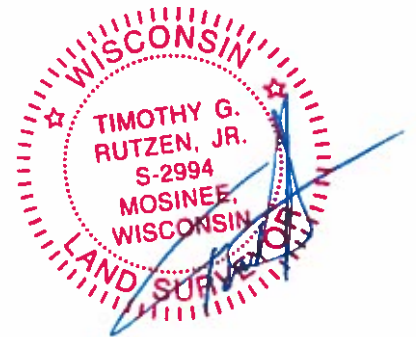
ELEVATION- --- DATUM ---

FIELD WORK DATE: 12/22/2016



LOCATION
(INDICATE CORNER BY "X")

SEAL:

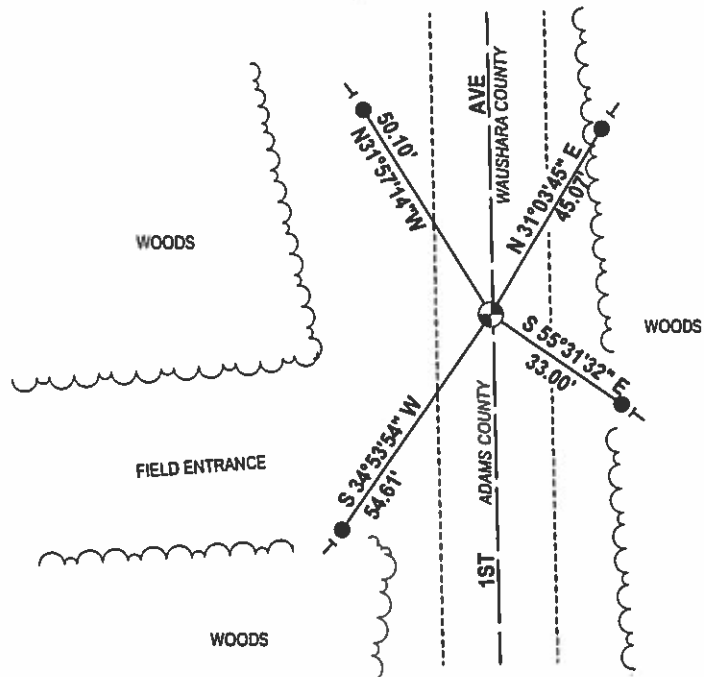
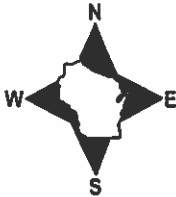


DATA SHOWN HERE ON THIS TIE SHEET IS CORRECT AND COMPLETE TO THE BEST OF MY KNOWLEDGE AND BELIEF.

PROFESSIONAL LAND SURVEYOR

DATE 2/9/17

TIE SKETCH



- 3/4" X 18" IRON REBAR SET, 1.50#/FT
- ⊕ HARRISON FOUND
- VINYL "T" POST

ADAMS COUNTY

Survey Monument Record

TYPE OF MONUMENT: 30" HARRISON

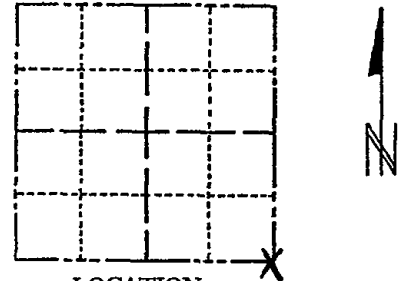
STATE PLANE COORDINATES: N _____ E _____

ELEVATION — M.S.L. DATUM: _____

THETA ANGLE: _____

FIELD BOOK: 108 PAGE 58

CORNER NO. 297 (73)
SECTION 13
TOWN 20
RANGE 7



LOCATION (Indicated by 'X')

SEAL:



BASIS FOR MONUMENT LOCATION

(Use reverse side if necessary)

Show info such as: History of corner, with reference to Vol. and pg, dates, surveyor; exact description of monument replaced; if location computed, by taped or EDM traverse; landowner remarks, etc.

Excavated area with backhoe, found nothing. Point set by analyzing traverse of entire section and comparing with original notes and possession lines.

Ok 4-30-84 SS-DK

Mon. o.k. 3-22-79 RN-JSK
2-GONE, 2-NEW TIES 10-14-94 JG-CR
OK 2-22-99-JG
1 NEW TIE 7-6-09 SS
OK 3-6-09-SS

CERTIFIED CORRECT:

Anthony B. Kiedrowski
Registered Land Surveyor

DATE: 9/18/73

TIE SKETCH

(Show at least four ties)

Ties are to nail and disc.

