

19
SECTION

20
TOWN

07
RANGE

ADAMS COUNTY

COUNTY CORNER NO: 82
ROMPORTOL ID: 42007190020

PUBLIC LAND SURVEY MONUMENT RECORD

TYPE OF MONUMENT: HARRISON
ADAMS COUNTY COORDINATES, NAD 83 (2007)

N. 298350.437

E. 559360.455

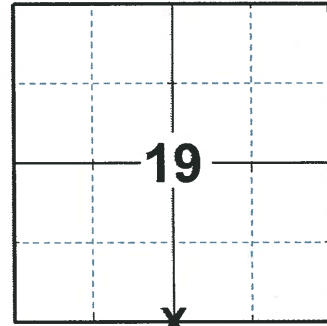
ELEVATION- DATUM

FIELD WORK DATE: 03/05/2020

BASIS FOR MONUMENT LOCATION

1983 - PLS 1551 PROBED AREA FOR ORIGINAL CORNER STAKE AND ROOTS OF BEARING TREES, NOTHING WAS FOUND. THERE IS NO OCCUPATION AND NO RECORD OF SUBSEQUENT USE OF THIS CORNER WAS FOUND. CORNER WAS RESET PROPORTIONALLY ON A STRAIGHT LINE BETWEEN ADJACENT SECTION CORNERS. LOCATION USED FOR THIS CORNER IS WITHIN 3 FEET OF THE ORIGINAL SURVEY DISTANCE.

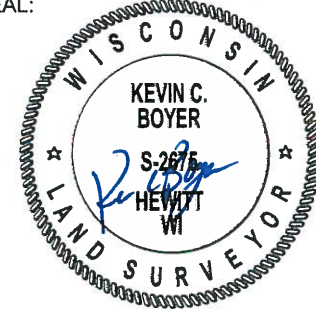
2020 - PLS 2675 FOUND HARRISON 6"± ABOVE THE GROUND AND 1 WITNESS TREE. THE MONUMENT AGREES WITH THE WITNESS AND IS ON A NEAR STRAIGHT LINE BETWEEN THE SW AND SE CORNERS OF SECTION 19. ACCEPTED THE HARRISON AS THE CORNER LOCATION. SET 4 NEW TIES AND MEASURED TO THE EXISTING WITNESS.



LOCATION

(INDICATE CORNER BY "X")

SEAL:

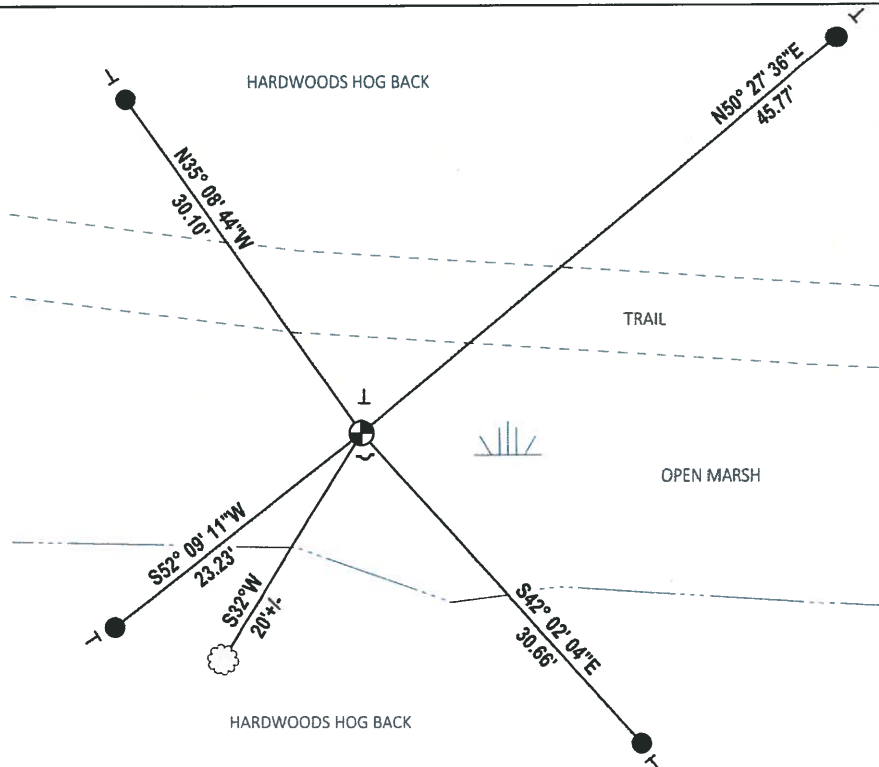


DATA SHOWN HERE ON THIS TIE SHEET IS CORRECT AND COMPLETE TO THE BEST OF MY KNOWLEDGE AND BELIEF.

PROFESSIONAL LAND SURVEYOR

DATE 3/25/2020

TIE SKETCH



- SET 3/4" x 18" IRON REBAR, 1.50#/FT
- ⊕ FOUND HARRISON MONUMENT
- ~ STEEL FENCE POST
- ┆ VINYL "T" POST
- ☼ WITNESS TREE

U.S. PUBLIC LAND SURVEY MONUMENT RECORD

ADAMS COUNTY

TYPE OF MONUMENT: Standard Harrison

STATE PLANE COORDINATES: N _____
E _____

ELEVATION — M.S.L. DATUM: _____

THETA ANGLE: _____

FIELD BOOK: Adams County PAGE 68

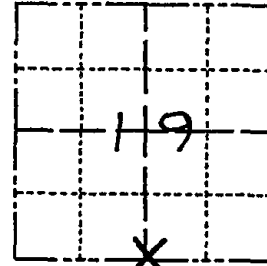
DRAWN BY: D. Riesop

CORNER NO. 82

SECTION 19

TOWN 20N

RANGE 7E



LOCATION
(Indicated by 'X')

BASIS FOR MONUMENT LOCATION

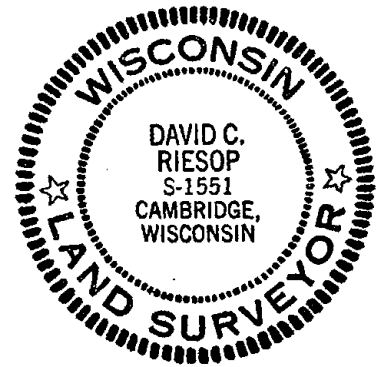
Show info such as: History of corner, with reference to Vol. and pg., dates, surveyor; exact description of monument replaced; if location computed, by taped or EDM traverse; landowner remarks, etc. (Use reverse side if necessary) (in conformance with Section A-E 502 of the Wisconsin Administrative Code)

Probed area for original corner stake and roots of bearing trees, nothing was found. There is no occupation and no record of subsequent use of this corner was found.

Corner was reset proportionally on a straight line between adjacent section corners.

Location used for this corner is within 3 feet of the original survey distance.

SEAL:



DATA SHOWN HERE ON
CERTIFIED CORRECT:

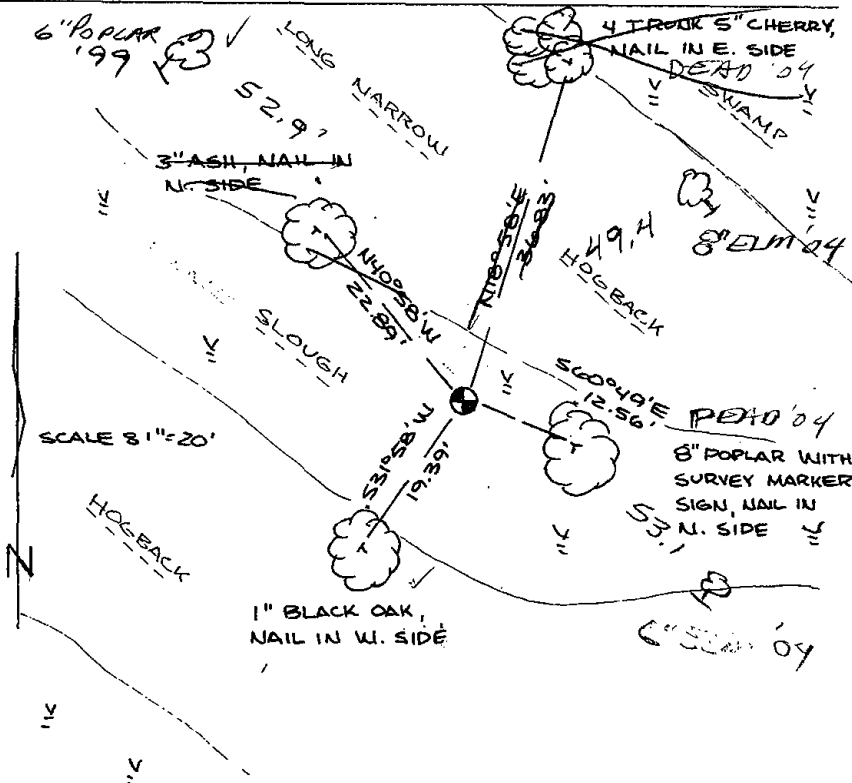
David C. Riesop
Registered Land Surveyor

DATE: 9/29/03

TIE SKETCH

Show at least four ties, also fence lines, roads, topo, size and type of witness trees' and if off road - best way to arrive at corner.

STEEL POST @ HAR.
± 10' S. of E-W TRAIL
ENTER FROM 6th AVE @
HSE # 511 - FIND TRAIL
NW of POND BY BLUE HSE



MAINTENANCE RECORD

Date	Init.	Remarks
15 JUNE 04	SS-CR	OK (BRING WADERS)
3-5-09	SS	1 NEW TIE
11-10-04	SS	2 "
3-03-09	SS	OK

