

22  
SECTION

20  
TOWN

07  
RANGE

# ADAMS COUNTY

COUNTY CORNER NO: 88  
ROMPORTOL ID: 42007220020

## PUBLIC LAND SURVEY MONUMENT RECORD

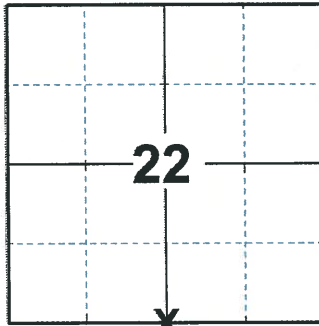
TYPE OF MONUMENT: 1-1/4" O.D. IRON PIPE  
ADAMS COUNTY COORDINATES, NAD 83 (2007)

N. 298426.398

E. 575311.974

ELEVATION- \_\_\_\_\_ DATUM \_\_\_\_\_

FIELD WORK DATE: 03/03/2020



**LOCATION**

(INDICATE CORNER BY "X")

### BASIS FOR MONUMENT LOCATION

1983 - PLS 1444 THIS CORNER WAS SET EQUIDISTANT AND ON LINE BETWEEN ADJACENT SECTION CORNERS. NO EVIDENCE OF PREVIOUS MONUMENTATION FOUND.

2020 - PLS 2675 FOUND 1-1/4" O.D. IRON PIPE FLUSH WITH THE GROUND AND DID NOT RECOVER ANY TIES OR WITNESSES. VERIFIED CORNER TO BE ON A NEAR STRAIGHT LINE AND EQUIDISTANT BETWEEN THE SW AND SE CORNERS OF SECTION 22. ACCEPTED THE 1-1/4" O.D. IRON PIPE AS THE BEST EVIDENCE OF THE CORNER LOCATION. SET 4 NEW TIES.

SEAL:

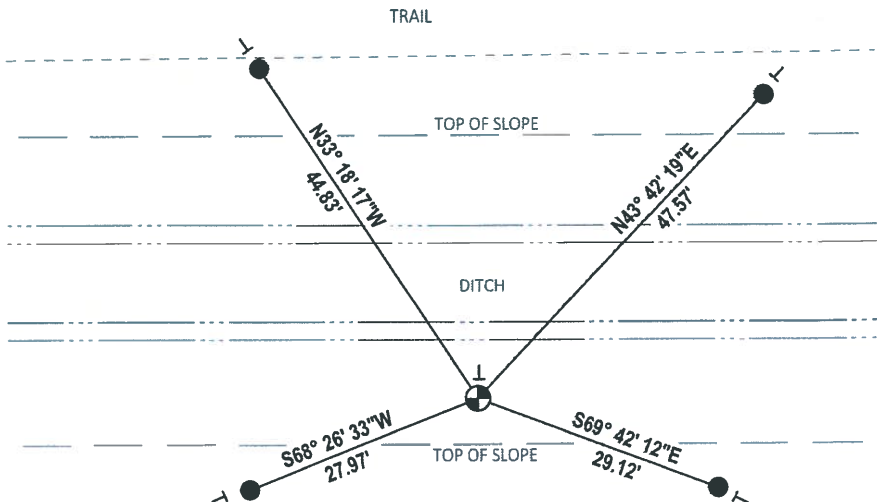


DATA SHOWN HERE ON THIS TIE SHEET IS CORRECT AND COMPLETE TO THE BEST OF MY KNOWLEDGE AND BELIEF.

PROFESSIONAL LAND SURVEYOR

DATE 3/25/2020

### - TIE SKETCH



- SET 3/4" x 18" IRON REBAR, 1.50#/FT
- ⊕ FOUND 1-1/4" O.D. IRON PIPE MONUMENT
- ⊖ VINYL "T" POST

# Government Land Corner Certificate

**ADAMS** County

TYPE OF MONUMENT: 1 1/4" x 5" IRON PIPE W/ALUM. CAP

STATE PLANE COORDINATES: N \_\_\_\_\_  
E \_\_\_\_\_

ELEVATION — M.S.L. DATUM: \_\_\_\_\_

THETA ANGLE: \_\_\_\_\_

FIELD BOOK: 91 PAGE 77

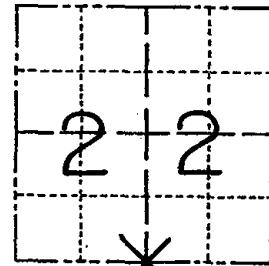
DRAWN BY: SJH

CORNER NO. 88

SECTION 22

TOWN 20

RANGE 7



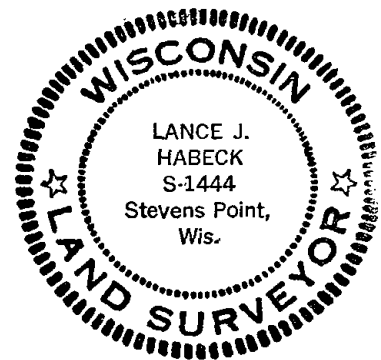
LOCATION  
(Indicated by 'X')

## BASIS FOR MONUMENT LOCATION

Show info such as: History of corner, with reference to Vol. and pg., dates, surveyor; exact description of monument replaced; if location computed, by taped or EDM traverse; landowner remarks, etc. (Use reverse side if necessary)

This corner was set equidistant and on line between adjacent Section corners. No evidence of previous monumentation found.

SEAL:



DATA SHOWN HERE ON  
CERTIFIED CORRECT:

*Lance J. Habeck*  
Registered Land Surveyor

DATE: \_\_\_\_\_

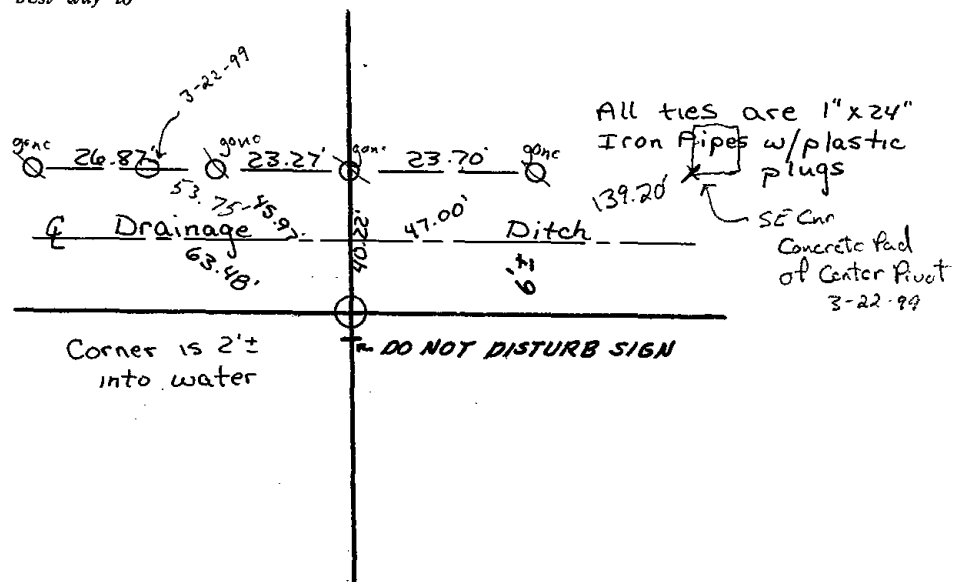
OK 4-20-84 SS-DK

OK 3-22-99 JG-JF 2 new ties; 4 IP gone;  
no other ties available

filed for record this 9th  
day of June, 1983  
per 59.60 Wisconsin Statutes.  
*L. Rhineland*  
ADAMS COUNTY SURVEYOR

## TIE SKETCH

Show at least four ties, also fence lines, roads, topo, size and type of witness trees and if off road - best way to arrive at corner.



Corner is 2'±  
into water

