

22  
SECTION

20  
TOWN

07  
RANGE

# ADAMS COUNTY

COUNTY CORNER NO: 89

ROMPORTOL ID: 42007220000

## PUBLIC LAND SURVEY MONUMENT RECORD

TYPE OF MONUMENT: 2-3/8" O.D. IRON PIPE W/ALUMINUM CAP

ADAMS COUNTY COORDINATES, NAD 83 (2007)

N. 298420.061

E. 577971.073

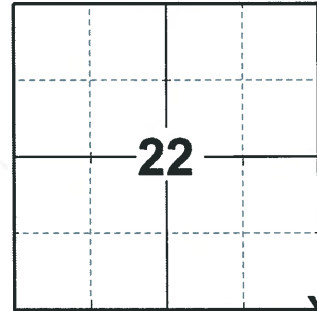
ELEVATION-      DATUM     

FIELD WORK DATE: 03/04/2020

### BASIS FOR MONUMENT LOCATION

1979 - PLS 1167 RAN COMPLETE E.D.M. TRAVERSE OF S1/2 OF SECTION 26, TO DETERMINE SEARCH AREAS. COULD FIND NO EVIDENCE OF THE ORIGINAL CORNER OR ANY REMONUMENTATION, OR ACCESSORY MONUMENTS. SET CORNER BY DOUBLING OVER DISTANCE FROM W1/4 CORNER AND SW CORNER 26-20-7, ON A STRAIGHT LINE.

2020 - PLS 2675 FOUND 2-3/8' O.D. IRON PIPE W/ALUMINUM CAP 6"± ABOVE THE GROUND AND 1 TIE. THE MONUMENT AGREES WITH THE TIE. ACCEPTED THE 2-3/8" O.D. IRON PIPE W/ALUMINUM CAP AS THE CORNER LOCATION. SET 3 NEW TIES AND MEASURED TO THE EXISTING TIE.



LOCATION

(INDICATE CORNER BY "X")

SEAL:

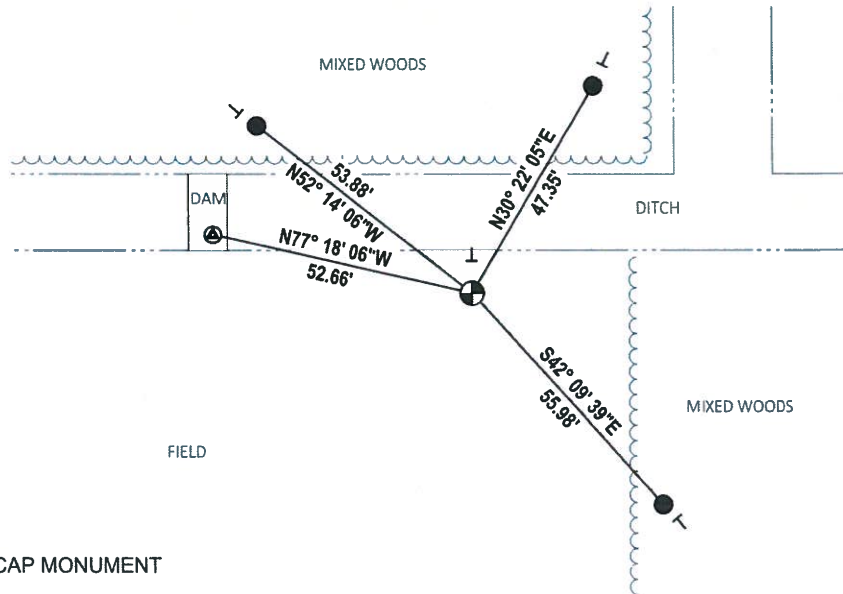


DATA SHOWN HERE ON THIS TIE SHEET IS CORRECT AND COMPLETE TO THE BEST OF MY KNOWLEDGE AND BELIEF.

PROFESSIONAL LAND SURVEYOR

DATE 3/25/2020

### TIE SKETCH

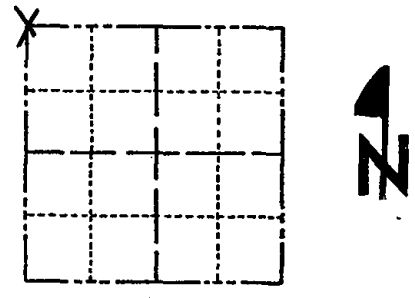


- SET 3/4" x 18" IRON REBAR, 1.50#/FT
- ⊗ FOUND USGS BENCHMARK
- ⊕ FOUND 2-3/8" O.D. IRON PIPE W/ALUMINUM CAP MONUMENT
- VINYL "T" POST

# Government Land Corner Certificate

Adams County  
 TYPE OF MONUMENT: 2"x60" Iron Pipe w/Almn. marked section corner  
 STATE PLANE COORDINATES: N \_\_\_\_\_  
 E \_\_\_\_\_  
 ELEVATION — M.S.L. DATUM: \_\_\_\_\_  
 THETA ANGLE: \_\_\_\_\_  
 FIELD BOOK: LL PAGE \_\_\_\_\_  
 DRAWN BY: Basler, Wayne

CORNER NO. 87  
 SECTION 26  
 TOWN 20  
 RANGE 7E



LOCATION  
(Indicated by 'X')

## BASIS FOR MONUMENT LOCATION

Show info such as: History of corner, with reference to Vol. and pg., dates, surveyor; exact description of monument replaced; if location computed, by taped or EDM traverse; landowner remarks, etc. (Use reverse side if necessary)

Ran complete E.D.M. Trverse of  $\frac{5}{2}$  of Sect. 26, to determine search areas. Could find no evidence of the original corner or any remonumentation, or accessory monuments. Set corner by doubling over distance from  $\frac{W}{4}$  Cor. & SW Cor. 26-20-7, on a straight line.

SEAL:



DATA SHOWN HERE ON CERTIFIED CORRECT:

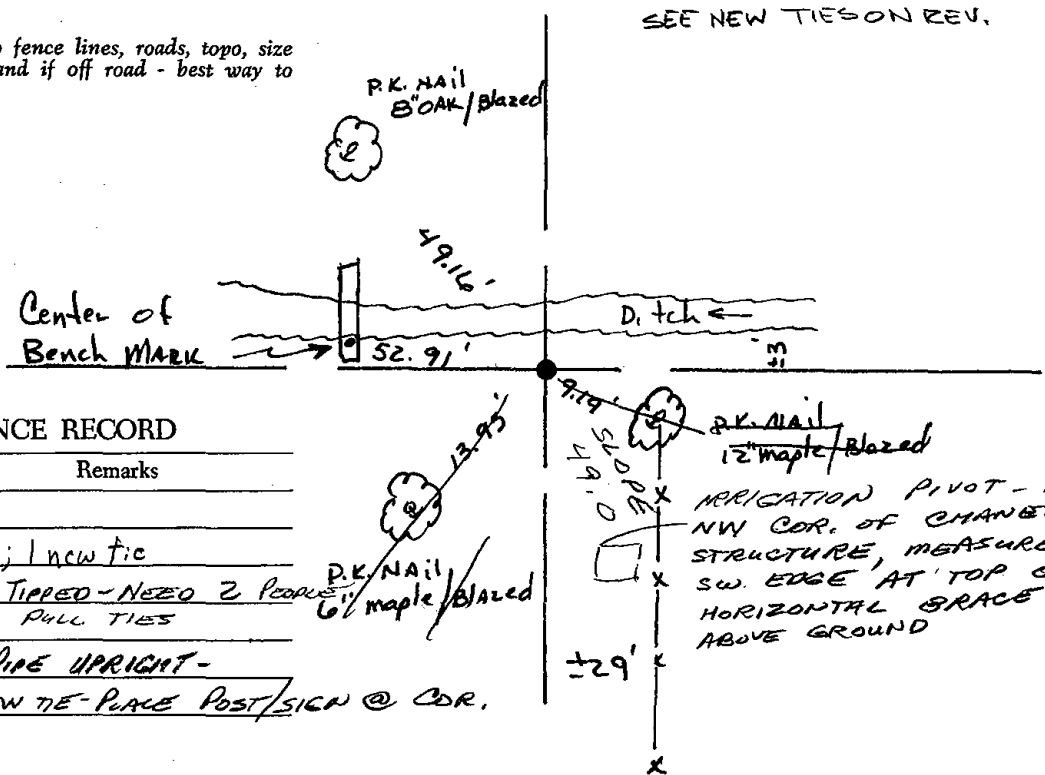
Wayne Basler  
Registered Land Surveyor

DATE: 5-23-79

Map updated on the 4<sup>th</sup> of 5-84 see the reverse side for the new map

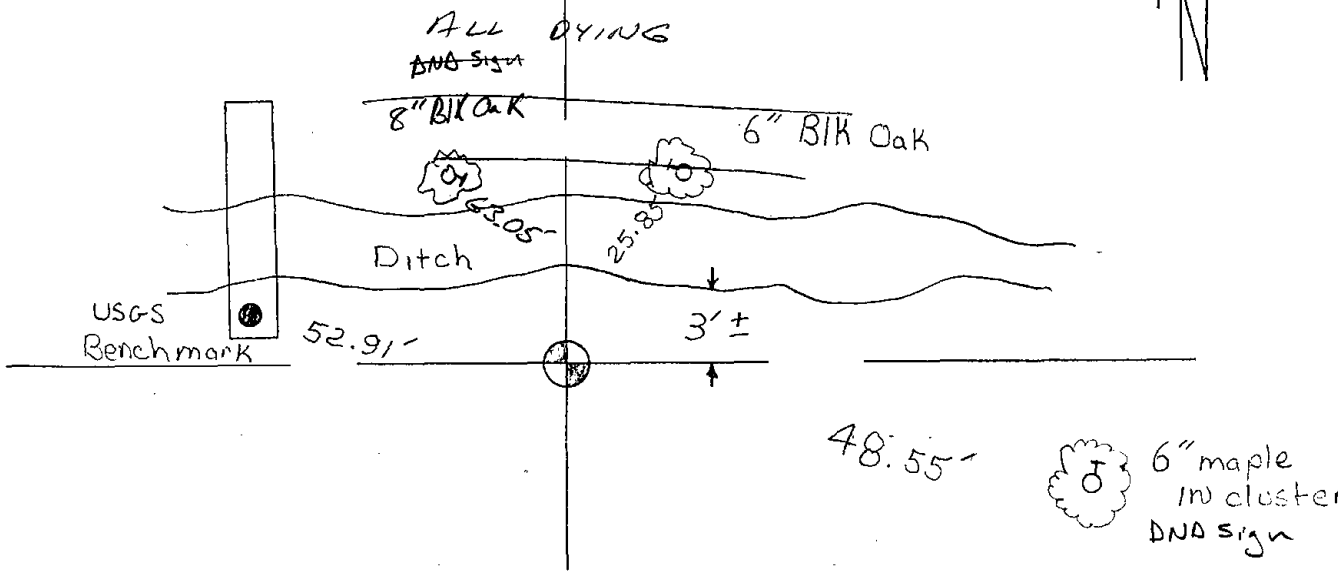
## TIE SKETCH

Show at least four ties, also fence lines, roads, topo, size and type of witness trees' and if off road - best way to arrive at corner.



## MAINTENANCE RECORD

Date	Init.	Remarks
15 JUNE 91	JS-ER	OK
22 MAR 99	JG-JE	OK; 1 new tie
7-7-09	SS	PIPE TIPPED - NEEDED 2 PEOPLE TO PULL TIES
12-14-04	JS-SS	FD. PIPE UPRIGHT -
10-07-09	SS	1 NEW TIE - PLACE POST/SIGN @ COR.



3 ties gone 2 new 5-4-84 SS-DK