

PUBLIC LAND SURVEY MONUMENT RECORD

TYPE OF MONUMENT: HARRISON

ADAMS COUNTY COORDINATES, NAD 83 (2007)

N. 295793.166

E. 572686.803

ELEVATION- DATUM

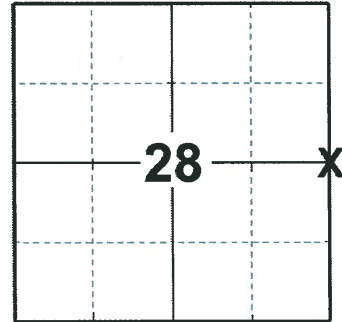
FIELD WORK DATE: 03/02/2020

BASIS FOR MONUMENT LOCATION

1976 - PLS 1103 RAN EDM/T2 TRAVERSE AROUND SECTIONS 28 AND 29, AND PORTIONS OF ADJOINING SECTIONS TO DETERMINE SEARCH AREA. EXCAVATION WITH BACKHOE YIELDED NO EVIDENCE OF THE ORIGINAL CORNER OR ANY REMONUMENTATION. COULD FIND NO ORIGINAL BEARING TREES. SET CORNER BY SINGLE PROPORTIONATE MEASURE ON LINE BETWEEN ADJACENT SECTION CORNERS. SET HARRISON MONUMENT ON 11-4-76.

1991 - PLS 1821 FOUND MONUMENT CERTIFIED BY DALE C. HAGEN R.L.S. #1103 DATED DEC. 2, 1976. RETIED MONUMENT.

2020 - PLS 2675 FOUND SURVEY NAIL IN THE ROAD SURFACE, REMOVED AND FOUND HARRISON 18"± BELOW AND 2 WITNESSES. THE MONUMENT AGREES WITH BOTH WITNESSES. ACCEPTED THE HARRISON AS THE CORNER LOCATION. SET 4 NEW TIES AND MEASURED TO THE EXISTING WITNESSES.



LOCATION
(INDICATE CORNER BY "X")

SEAL:



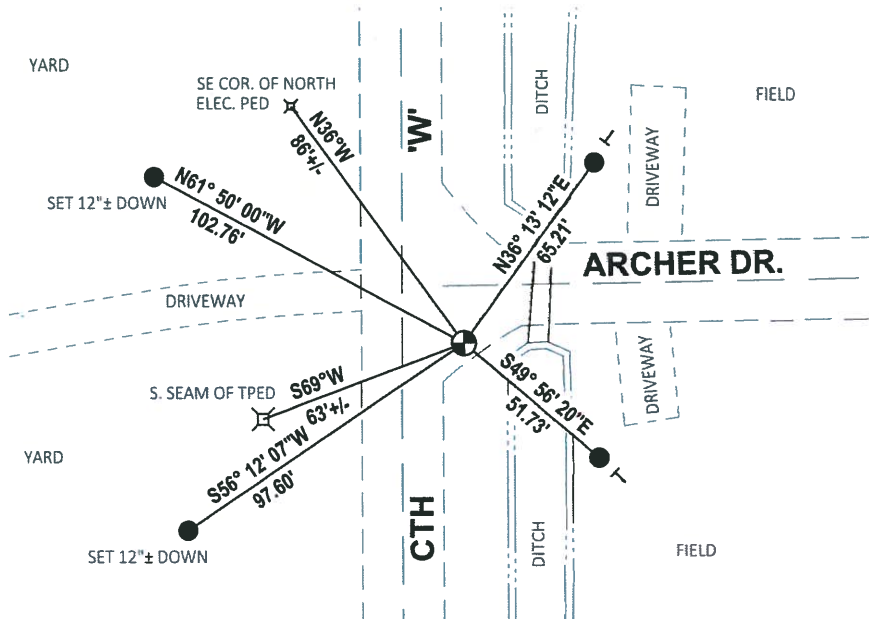
DATA SHOWN HERE ON THIS TIE SHEET IS CORRECT AND COMPLETE TO THE BEST OF MY KNOWLEDGE AND BELIEF.

PROFESSIONAL LAND SURVEYOR

DATE 3/25/2020

- TIE SKETCH

NOTE: THE CORNER LANDS 17.2'± SOUTH OF ARCHER DR. CENTERLINE AND 18.4'± EAST OF CTH 'W' CENTERLINE

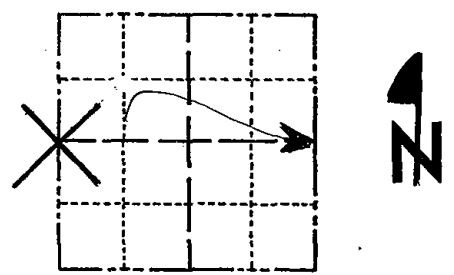


- SET 3/4" x 18" IRON REBAR, 1.50#/FT
- ⊙ FOUND HARRISON MONUMENT
- ⊢ VINYL "T" POST

Government Land Corner Certificate

ADAMS County
 TYPE OF MONUMENT: HARRISON
 STATE PLANE COORDINATES: N _____
 E _____
 ELEVATION — M.S.L. DATUM: _____
 THETA ANGLE: _____
 FIELD BOOK: _____ PAGE _____
 DRAWN BY: VISSERS

CORNER NO. 97
 SECTION 28
 TOWN 20N
 RANGE 7E



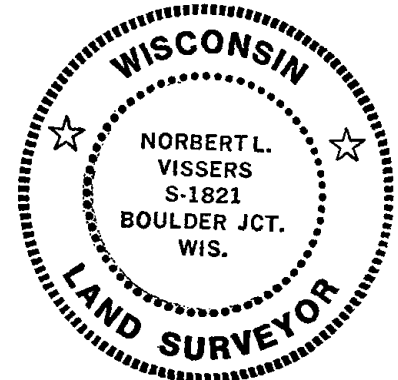
LOCATION
 (Indicated by 'X')

BASIS FOR MONUMENT LOCATION

Show info such as: History of corner, with reference to Vol. and pg., dates, surveyor; exact description of monument replaced; if location computed, by taped or EDM traverse; landowner remarks, etc. (Use reverse side if necessary)

Found Monument Certified By Dale C. Hagen
 R.L.S. #1103 Dated Dec. 2, 1976.
 Retied Monument as Shown Below.

SEAL:



DATA SHOWN HERE ON
 CERTIFIED CORRECT:

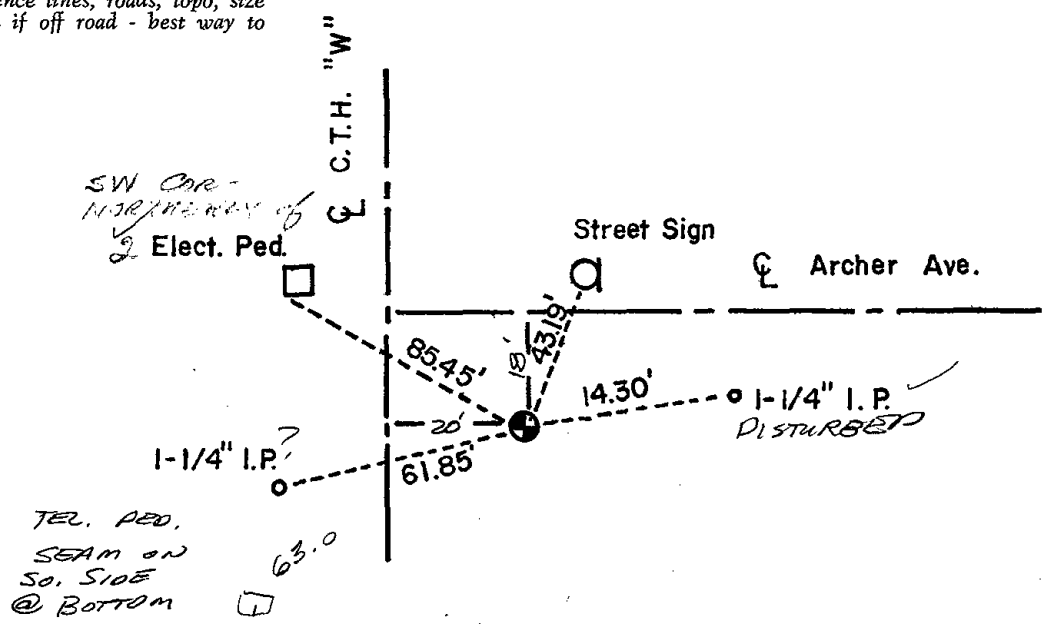
Norbert L. Vissers
 Registered Land Surveyor

DATE: Jan. 17, 1991

*County Trunk W
 ON EAST SIDE OF
 SECTION 28*

TIE SKETCH

Show at least four ties, also fence lines, roads, topo, size and type of witness trees' and if off road - best way to arrive at corner.



ADAMS COUNTY

Survey Monument Record

TYPE OF MONUMENT: Standard Harrison

STATE PLANE COORDINATES: N _____

E _____

ELEVATION — M.S.L. DATUM: _____

THETA ANGLE: _____

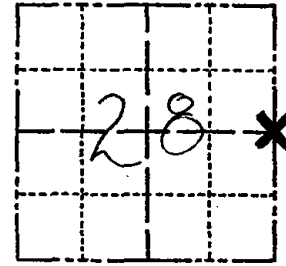
FIELD BOOK: 37 PAGE 68

CORNER NO. 97

SECTION 28

TOWN 20

RANGE 7



LOCATION
(Indicated by 'X')

SEAL:

BASIS FOR MONUMENT LOCATION

(Use reverse side if necessary)

Show info such as: History of corner, with reference to Vol. and pg, dates, surveyor; exact description of monument replaced; if location computed, by taped or EDM traverse; landowner remarks, etc.

Ran EDM/T2 traverse around Sections 28 and 29, and portions of adjoining sections to determine search area.

Excavation with backhoe yielded no evidence of the original corner or any remonumentation. Could find no original bearing trees.

Set corner by single proportionate measure on line between adjacent section corners.

Set Harrison monument on 11-4-76.



O.K. 4-12-79 RN-SS

Ok 4-20-84 SS-DK

CERTIFIED CORRECT:

Dale C Hagen
Registered Land Surveyor
DATE: 12-2-76

TIE SKETCH

(Show at least four ties)

NOTE

Ties in trees to nail in disc.

