

## PUBLIC LAND SURVEY MONUMENT RECORD

TYPE OF MONUMENT: HARRISON (BROKEN-TOP)

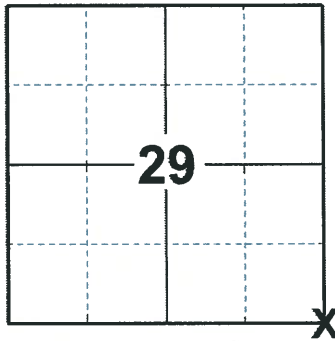
ADAMS COUNTY COORDINATES, NAD 83 (2007)

N. 293124.021

E. 567417.727

ELEVATION- \_\_\_\_\_ DATUM \_\_\_\_\_

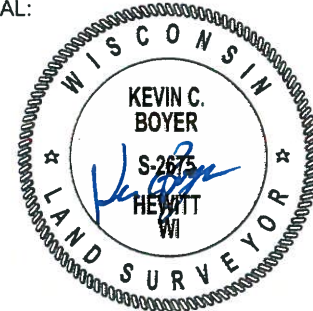
FIELD WORK DATE: 03/02/2020



LOCATION

(INDICATE CORNER BY "X")

SEAL:



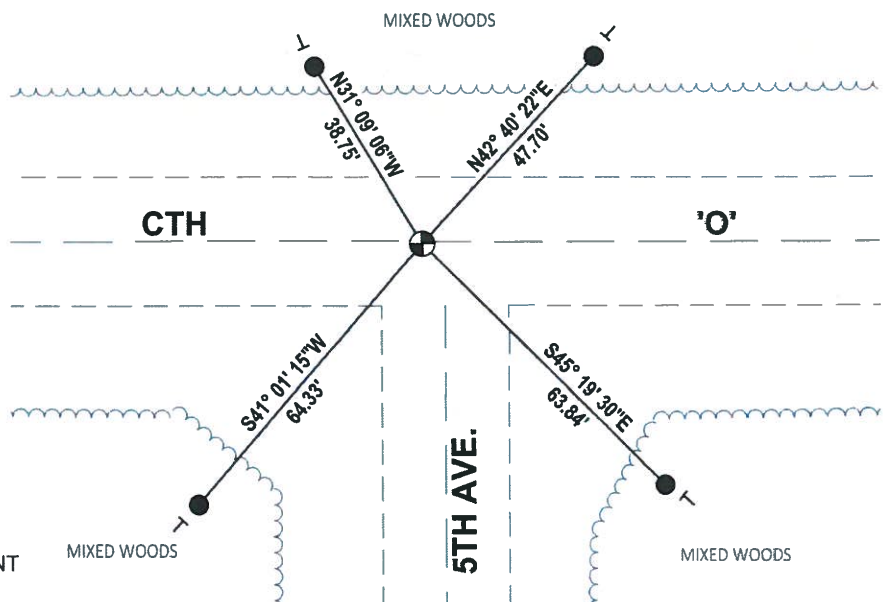
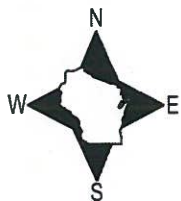
DATA SHOWN HERE ON THIS TIE SHEET IS CORRECT AND COMPLETE TO THE BEST OF MY KNOWLEDGE AND BELIEF.

PROFESSIONAL LAND SURVEYOR

DATE 3/25/2020

### TIE SKETCH

NOTE: THE CORNER LANDS 0.3'± SOUTH OF CTH 'O' CENTERLINE AND 3.2'± WEST OF 5TH AVE. CENTERLINE



- SET 3/4" x 18" IRON REBAR, 1.50#/FT
- FOUND HARRISON (BROKEN-TOP) MONUMENT
- VINYL "T" POST

ADAMS COUNTY

Survey Monument Record

TYPE OF MONUMENT: Harrison standard

STATE PLANE COORDINATES: N \_\_\_\_\_

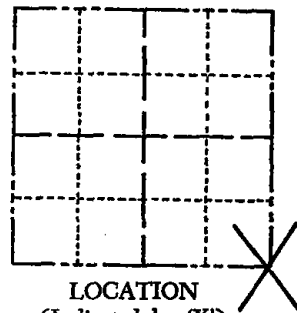
E \_\_\_\_\_

ELEVATION — M.S.L. DATUM: \_\_\_\_\_

THETA ANGLE: \_\_\_\_\_

FIELD BOOK: 101 PAGE 67

CORNER NO. 105  
1091  
SECTION 29  
TOWN 20  
RANGE 7



LOCATION  
(Indicated by 'X')

SEAL:

BASIS FOR MONUMENT LOCATION

(Use reverse side if necessary)

Show info such as: History of corner, with reference to Vol. and pg, dates, surveyor; exact description of monument replaced; if location computed, by taped or EDM traverse; landowner remarks, etc.

Excavated with backhoe. Found 8x8x12" stone (sand) in fractured condition but in place. Replaced with Harrison and put stone fragments around it. Stone called for by Barrett per old field notes, Vol. 2,pg.207.



1 new tie 4-20-84 SS-DK

MON. O.K. 3-23-79 RN-DW

3-GONE, 2-NEW TIES 3-16-94 JG-SS

OK 2-12-99 - JG  
OK 6-01-04 SS  
OK 2-6-09 SS

CERTIFIED CORRECT:

Anthony B. Kiedrowski  
Registered Land Surveyor

DATE: 10/12/76

TIE SKETCH

(Show at least four ties)

