

PUBLIC LAND SURVEY MONUMENT RECORD

TYPE OF MONUMENT: HARRISON (BROKEN-TOP)

ADAMS COUNTY COORDINATES, NAD 83 (2007)

N. 293152.769

E. 572720.479

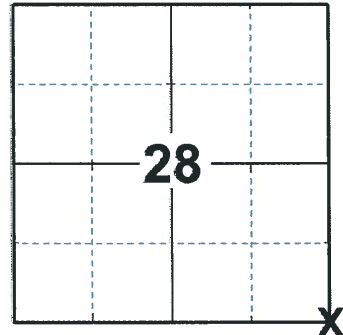
ELEVATION- DATUM

FIELD WORK DATE: 03/02/2020

BASIS FOR MONUMENT LOCATION

1973 - PLS 878 FOUND STONE AND SET MONUMENT JULY 25, 1972. LOCAL LANDOWNER ARCHIE GEAR RECALLED SEEING A STONE MARKER HERE YEARS AGO. WE EXCAVATED WITH A BACKHOE AND FOUND A TRIANGULAR PIECE OF STONE ABOUT 16" LONG. THIS WAS THE FIRST TIME THIS SURVEYOR DUG IN ADAMS COUNTY ROADS WITH A BACKHOE. MR. GEAR WAS PRESENT DURING THE EXCAVATION. REPLACED STONE WITH HARRISON.

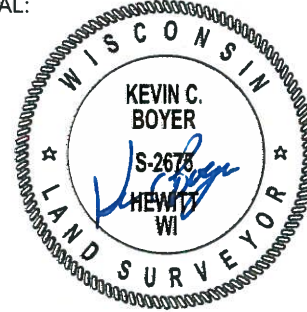
2020 - PLS 2675 FOUND HARRISON (BROKEN-TOP) 24"± BELOW THE ROAD SURFACE AND 2 WITNESSES. THE MONUMENT AGREES WITH BOTH WITNESSES. ACCEPTED THE HARRISON (BROKEN-TOP) AS THE CORNER LOCATION. SET 4 NEW TIES AND MEASURED TO THE EXISTING WITNESSES.



LOCATION

(INDICATE CORNER BY "X")

SEAL:



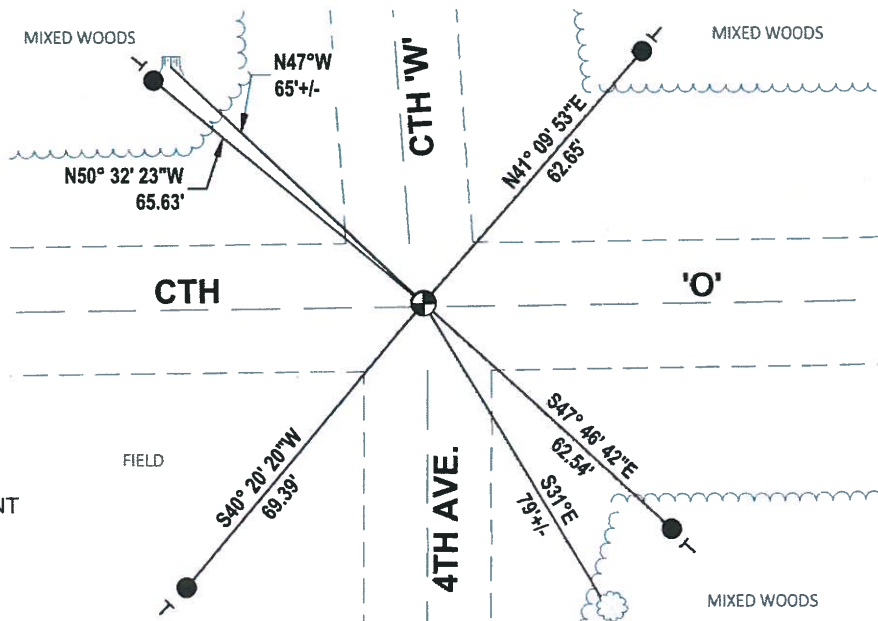
DATA SHOWN HERE ON THIS TIE SHEET IS CORRECT AND COMPLETE TO THE BEST OF MY KNOWLEDGE AND BELIEF.

PROFESSIONAL LAND SURVEYOR

DATE 3/25/2020

TIE SKETCH

NOTE: THE CORNER LANDS 0.7'± NORTH OF CTH 'O' CENTERLINE



- SET 3/4" x 18" IRON REBAR, 1.50#/FT
- ⊕ FOUND HARRISON (BROKEN-TOP) MONUMENT
- ├ VINYL "T" POST
- ⊙ WITNESS TREE
- ▣ WITNESS STUMP

ADAMS COUNTY

Survey Monument Record

TYPE OF MONUMENT: 30" HARRISON

STATE PLANE COORDINATES: N _____

E _____

ELEVATION — M.S.L. DATUM: _____

THETA ANGLE: _____

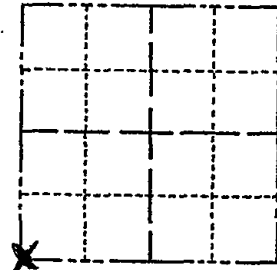
FIELD BOOK: 106? PAGE ?

CORNER NO. 158

SECTION 27

TOWN 20

RANGE 7



LOCATION
(Indicated by 'X')

SEAL:



BASIS FOR MONUMENT LOCATION

(Use reverse side if necessary)

Show info such as: History of corner, with reference to Vol. and pg, dates, surveyor; exact description of monument replaced; if location computed, by taped or EDM traverse; landowner remarks, etc.

Found stone and set monument

July 25, 1972

Anthony B. Kiedrowski R.L.S. 878
 Local landowner Archie Gear recalled seeing a stone marker here years ago. We excavated with a backhoe and found a triangular piece of stone about 16" long. This was the first time this surveyor dug in Adams County roads with a backhoe. Mr. Gear was present during the excavation.

Replaced stone with Harrison.

CERTIFIED CORRECT:

Anthony B. Kiedrowski
 Registered Land Surveyor

DATE: 1-29-73

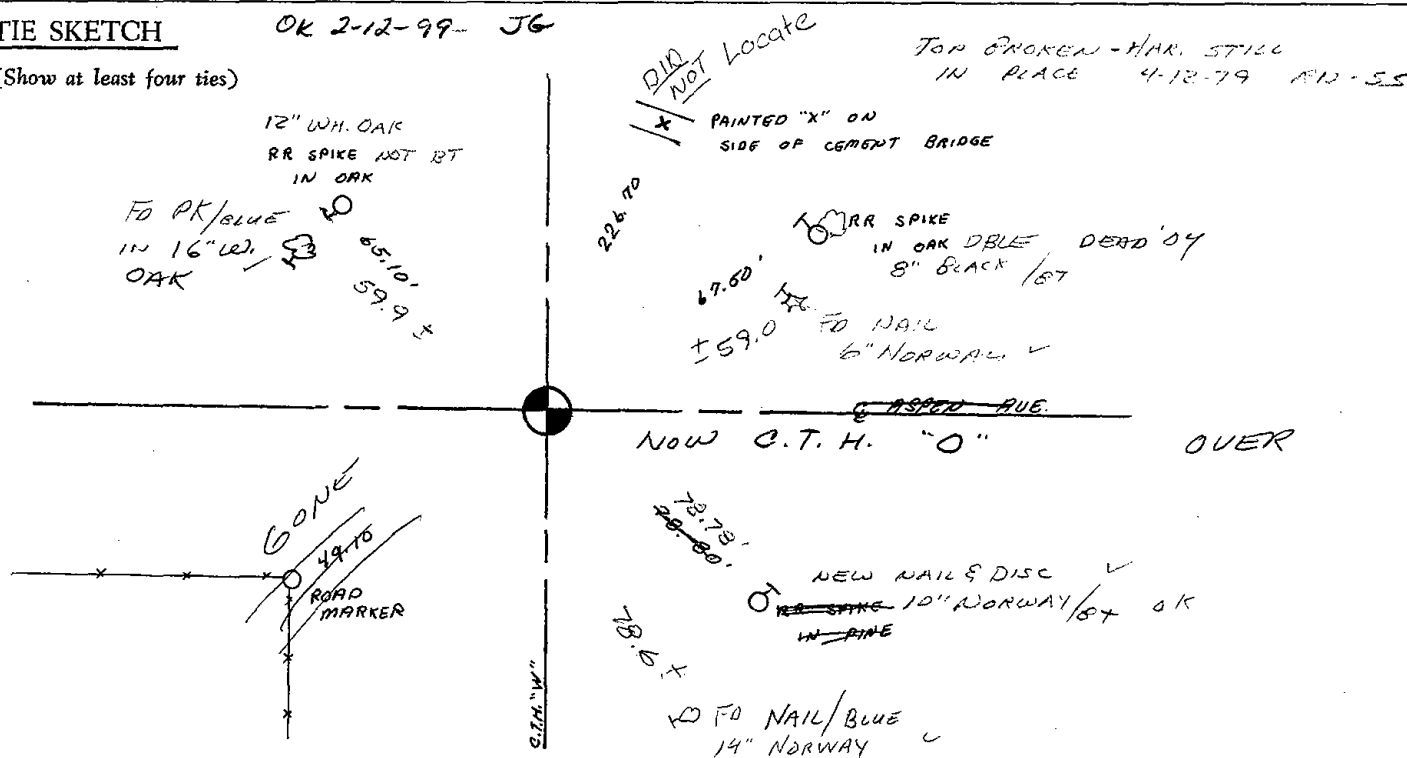
Ok 4-20-84 SS-DK

OK 3-16-94 JG-SS

TIE SKETCH

OK 2-12-99 JG

(Show at least four ties)



6-01-04 STS
FD 3 OLDER TIES AND 3 NEWER TIES WITH "BLUE
WHISKERS"

NO RECORD OF NEWER

2-06-09 TIES OK SS