

27 SECTION 20 TOWN 07 RANGE

ADAMS COUNTY

COUNTY CORNER NO: 109
 ROMPORTOL ID: 42007270000

PUBLIC LAND SURVEY MONUMENT RECORD

TYPE OF MONUMENT: HARRISON (BROKEN-TOP)
 ADAMS COUNTY COORDINATES, NAD 83 (2007)

N. 293187.811

E. 578005.895

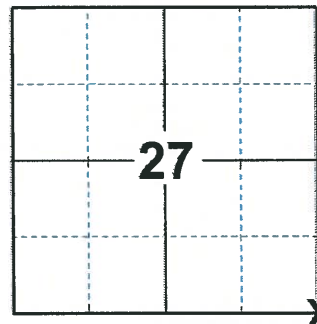
ELEVATION- - - - DATUM - - - -

FIELD WORK DATE: 02/27/2020

BASIS FOR MONUMENT LOCATION

1975 - PLS 1103 RAN EDM/TRANSIT TRAVERSE AROUND SECTIONS 35 AND 36 TO DETERMINE SEARCH AREA. ADJACENT LAND OWNER (A. GEAR) INDICATED WHERE THE CORNER COULD BE FOUND. EXCAVATION BY HAND YIELDED A PILE OF CONCRETE PLACED IN A LOG CABIN-STYLE TO A DEPTH OF ABOUT 30 INCHES. MR. GEAR SAID THAT THIS WAS REMONUMENTATION OF THE CORNER. REMONUMENTED CENTER OF THE PILE WITH STANDARD HARRISON MONUMENT.

2020 - PLS 2675 FOUND HARRISON (BROKEN-TOP) 12"± BELOW THE GROUND AND 1 WITNESS. THE MONUMENT AGREES WITH THE WITNESS. ACCEPTED THE HARRISON (BROKEN-TOP) AS THE CORNER LOCATION. SET 4 NEW TIES AND MEASURED TO THE EXISTING WITNESS.



LOCATION
 (INDICATE CORNER BY "X")

SEAL:



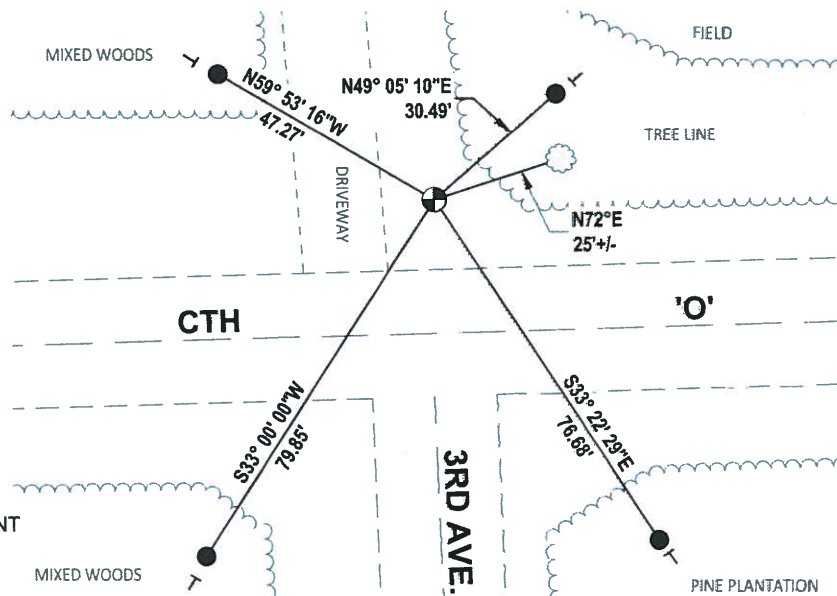
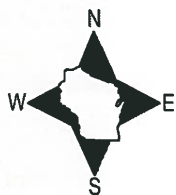
DATA SHOWN HERE ON THIS TIE SHEET IS CORRECT AND COMPLETE TO THE BEST OF MY KNOWLEDGE AND BELIEF.

PROFESSIONAL LAND SURVEYOR

DATE 3/25/2020

- TIE SKETCH

NOTE: THE CORNER LANDS 25.4'± NORTH OF CTH 'O' CENTERLINE



- SET 3/4" x 18" IRON REBAR, 1.50#/FT
- ⊕ FOUND HARRISON (BROKEN-TOP) MONUMENT
- ┆ VINYL "T" POST
- WITNESS TREE

ADAMS COUNTY

CORNER NO. 655
 SECTION 35
 TOWN 20
 RANGE 7

Survey Monument Record

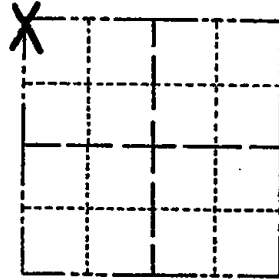
TYPE OF MONUMENT: HARRISON STANDARD 30 inches

STATE PLANE COORDINATES: N _____
E _____

ELEVATION — M.S.L. DATUM: _____

THETA ANGLE: _____

FIELD BOOK: _____ PAGE _____



LOCATION
(Indicated by 'X')

SEAL:



BASIS FOR MONUMENT LOCATION

(Use reverse side if necessary)

Show info such as: History of corner, with reference to Vol. and pg, dates, surveyor; exact description of monument replaced; if location computed, by taped or EDM traverse; landowner remarks, etc.

Ran EDM/transit traverse around Sections 35 and 36 to determine search area.

Adjacent land owner (A. Gear) indicated where the corner could be found. Excavation by hand yielded a pile of concrete placed in a log cabin-style to a depth of about 30 inches. Mr. Gear said that this was the remonumentation of the corner.

Remonumented center of pile with Standard Harrison Monument.

CERTIFIED CORRECT:

Dale C Hagen
 Registered Land Surveyor
 DATE: May 5, 1975

1 new 4-30-84 SS-DK

4-03-09 FD. BOTTOM OF MOW IN PLACE 10" DEEP
2 NEW TIES

OK 3-16-99 JGSS

TIE SKETCH OK 2-12-99-JG

ADD 1 775 7-6-04 SS
(Show at least four ties)

NOTE: Ties in trees to nail in disc. Bearing trees marked BT are blazed and scribed with BT facing corner.

