

26  
SECTION

20  
TOWN

07  
RANGE

# ADAMS COUNTY

COUNTY CORNER NO: 110

ROMPORTOL ID: 42007260020

## PUBLIC LAND SURVEY MONUMENT RECORD

TYPE OF MONUMENT: HARRISON  
ADAMS COUNTY COORDINATES, NAD 83 (2007)

N. 293218.027

E. 580667.034

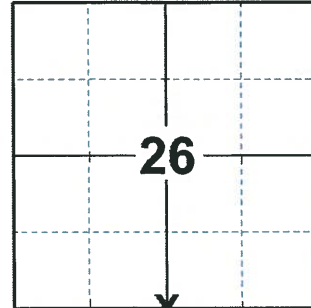
ELEVATION- - - - DATUM - - - -

FIELD WORK DATE: 02/27/2020

### BASIS FOR MONUMENT LOCATION

1975 - PLS 1103 RAN EDM/TRANSIT TRAVERSE AROUND SECTIONS 35 AND 36 TO DETERMINE SEARCH AREA. COULD FIND NO EVIDENCE OF THE ORIGINAL CORNER OR ANY SUBSEQUENT REMONUMENTATION, OR OF ANY ACCESSORY REMONUMENTATION. SET CORNER EQUIDISTANT AND ON LINE BETWEEN ADJACENT SECTION CORNERS.

2020 - PLS 2675 FOUND PK NAIL IN THE ROAD SURFACE, REMOVED AND FOUND HARRISON MONUMENT 24"± BELOW THE ROAD SURFACE, AND 3 WITNESSES. THE MONUMENT AGREES WITH ALL OF THE WITNESSES. ACCEPTED THE HARRISON AS THE CORNER LOCATION. SET 4 NEW TIES AND MEASURED TO THE EXISTING WITNESSES.



LOCATION  
(INDICATE CORNER BY "X")

SEAL:



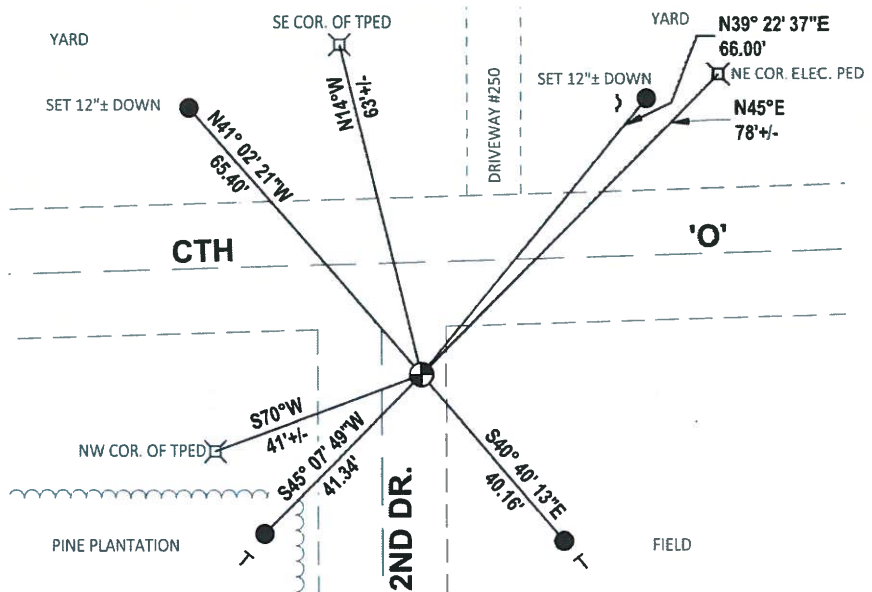
DATA SHOWN HERE ON THIS TIE SHEET IS CORRECT AND COMPLETE TO THE BEST OF MY KNOWLEDGE AND BELIEF.

PROFESSIONAL LAND SURVEYOR

DATE 3/25/2020

### TIE SKETCH

NOTE: THE CORNER LANDS 20.9'± SOUTH OF CTH 'O' CENTERLINE AND 7.3'± EAST OF 2ND DR. CENTERLINE



- SET 3/4" x 18" IRON REBAR, 1.50#/FT
- ⊕ FOUND HARRISON MONUMENT
- ✓ STEEL FENCE POST
- ⊥ VINYL "T" POST

**ADAMS COUNTY**

**Survey Monument Record**

TYPE OF MONUMENT: Harrison Monument

STATE PLANE COORDINATES: N \_\_\_\_\_  
E \_\_\_\_\_

ELEVATION — M.S.L. DATUM: \_\_\_\_\_

THETA ANGLE: \_\_\_\_\_

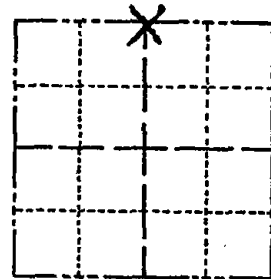
FIELD BOOK: \_\_\_\_\_ PAGE \_\_\_\_\_

CORNER NO. 654

SECTION 35

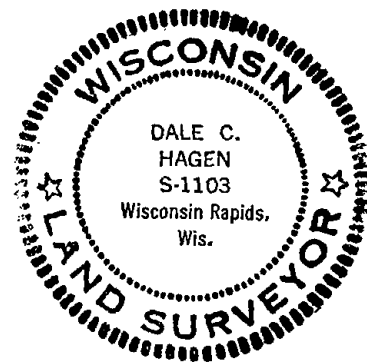
TOWN 20

RANGE 7



LOCATION  
(Indicated by 'X')

SEAL:



**BASIS FOR MONUMENT LOCATION**

(Use reverse side if necessary)

Show info such as: History of corner, with reference to Vol. and pg, dates, surveyor; exact description of monument replaced; if location computed, by taped or EDM traverse; landowner remarks, etc.

Ran EDM/transit traverse around Sections 35 and 36 to determine search areas.

Could find no evidence of the original corner or any subsequent remonumentation, or of any accessory remonumentation.

Set corner equidistant and on line between adjacent section corners.

OK 3-23-79 DW-RN

CERTIFIED CORRECT:

Ok 4-30-84 SS-DK

2-GONE, 2-NEW TIE 15 JUN 94, JB-CR

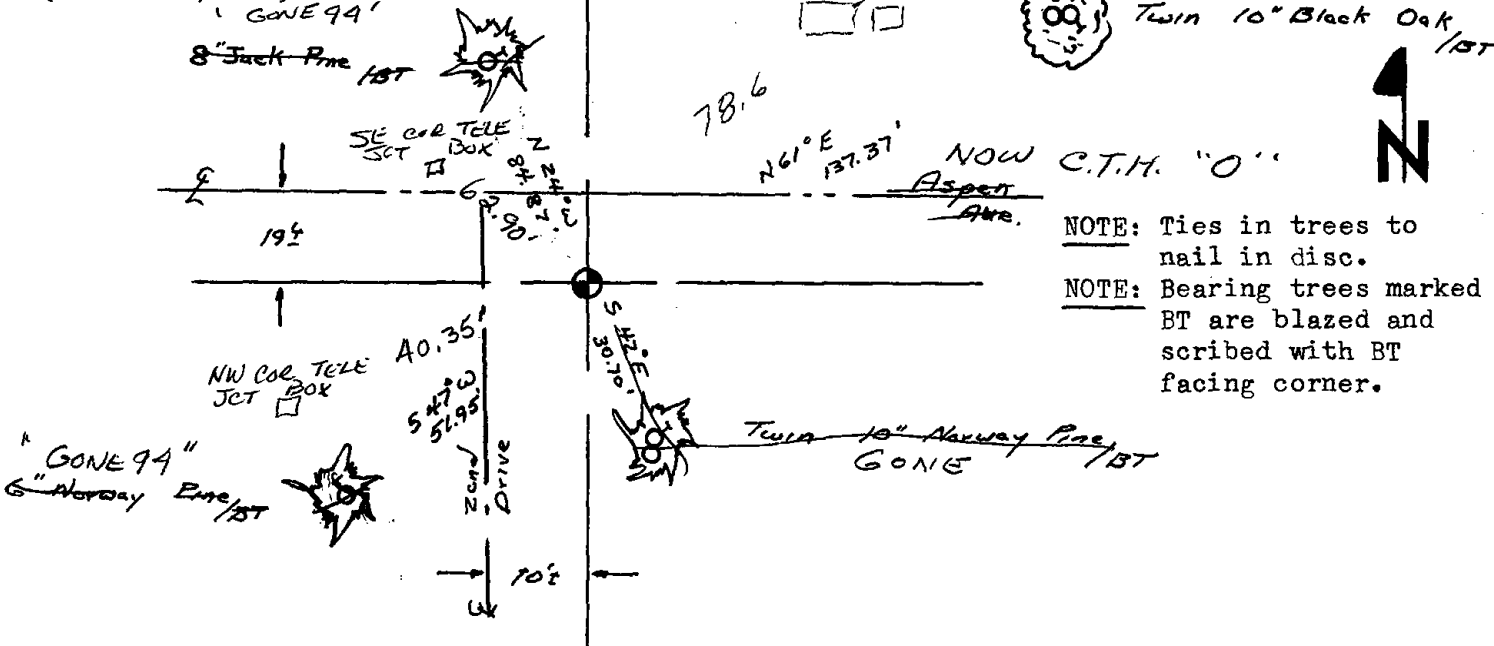
Dale C. Hagen  
Registered Land Surveyor

OK 2-12-99 - JG

DATE: May 5, 1975

**TIE SKETCH** NEW TIES 7-6-04 SS  
OK 2-6-09 SS

(Show at least four ties)



NOTE: Ties in trees to nail in disc.

NOTE: Bearing trees marked BT are blazed and scribed with BT facing corner.