

32
SECTION

20
TOWN

07
RANGE

ADAMS COUNTY

COUNTY CORNER NO: 116
ROMPORTOL ID: 42007322000

PUBLIC LAND SURVEY MONUMENT RECORD

TYPE OF MONUMENT: HARRISON (BROKEN-TOP)

ADAMS COUNTY COORDINATES, NAD 83 (2007)

N. 290485.046

E. 567447.622

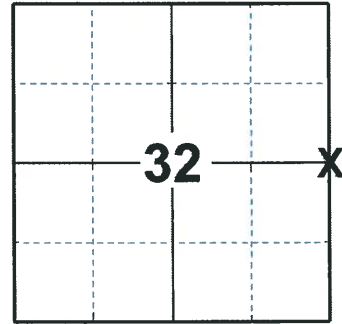
ELEVATION- DATUM

FIELD WORK DATE: 03/12/2020

BASIS FOR MONUMENT LOCATION

1976 - PLS 1103 RAN EDM/T2 TRAVERSE AROUND SECTIONS 28 AND 29, AND PORTIONS OF ADJOINING SECTIONS TO DETERMINE SEARCH AREA. EXCAVATION WITH BACKHOE YIELDED NO EVIDENCE OF THE ORIGINAL CORNER OR ANY REMONUMENTATION. COULD FIND NO EVIDENCE OF ORIGINAL BEARING TREES. RE-ESTABLISHED CORNER BY SINGLE PROPORTIONATE MEASURE ON LINE BETWEEN ADJACENT SECTION CORNERS. STANDARD HARRISON SET 11-4-76.

2020 - PLS 2675 FOUND HARRISON (BROKEN-TOP) 6"± BELOW THE ROAD AND 1 TIE. THE MONUMENT AGREES WITH THE TIE. ACCEPTED THE HARRISON (BROKEN-TOP) AS THE CORNER LOCATION. SET 3 NEW TIES AND MEASURED TO THE EXISTING TIE.



LOCATION
(INDICATE CORNER BY "X")

SEAL:



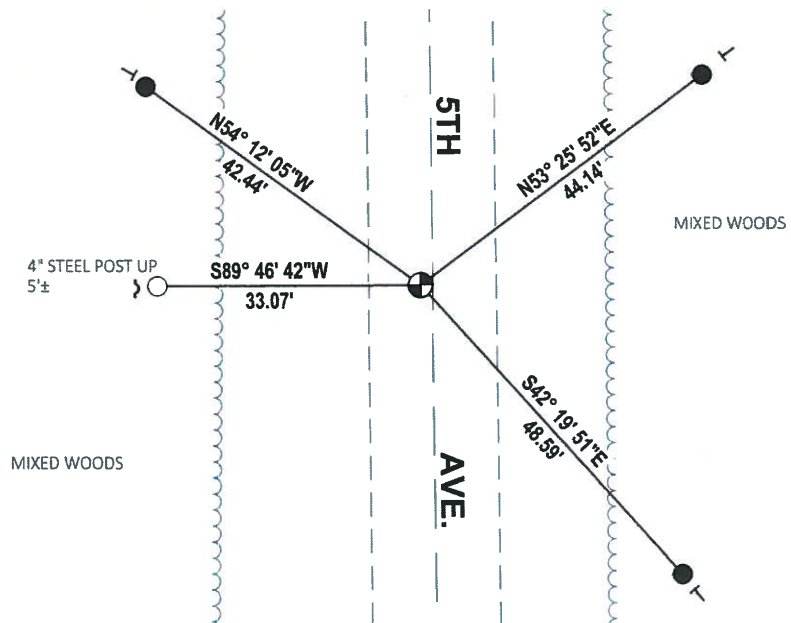
DATA SHOWN HERE ON THIS TIE SHEET IS CORRECT AND COMPLETE TO THE BEST OF MY KNOWLEDGE AND BELIEF.

PROFESSIONAL LAND SURVEYOR

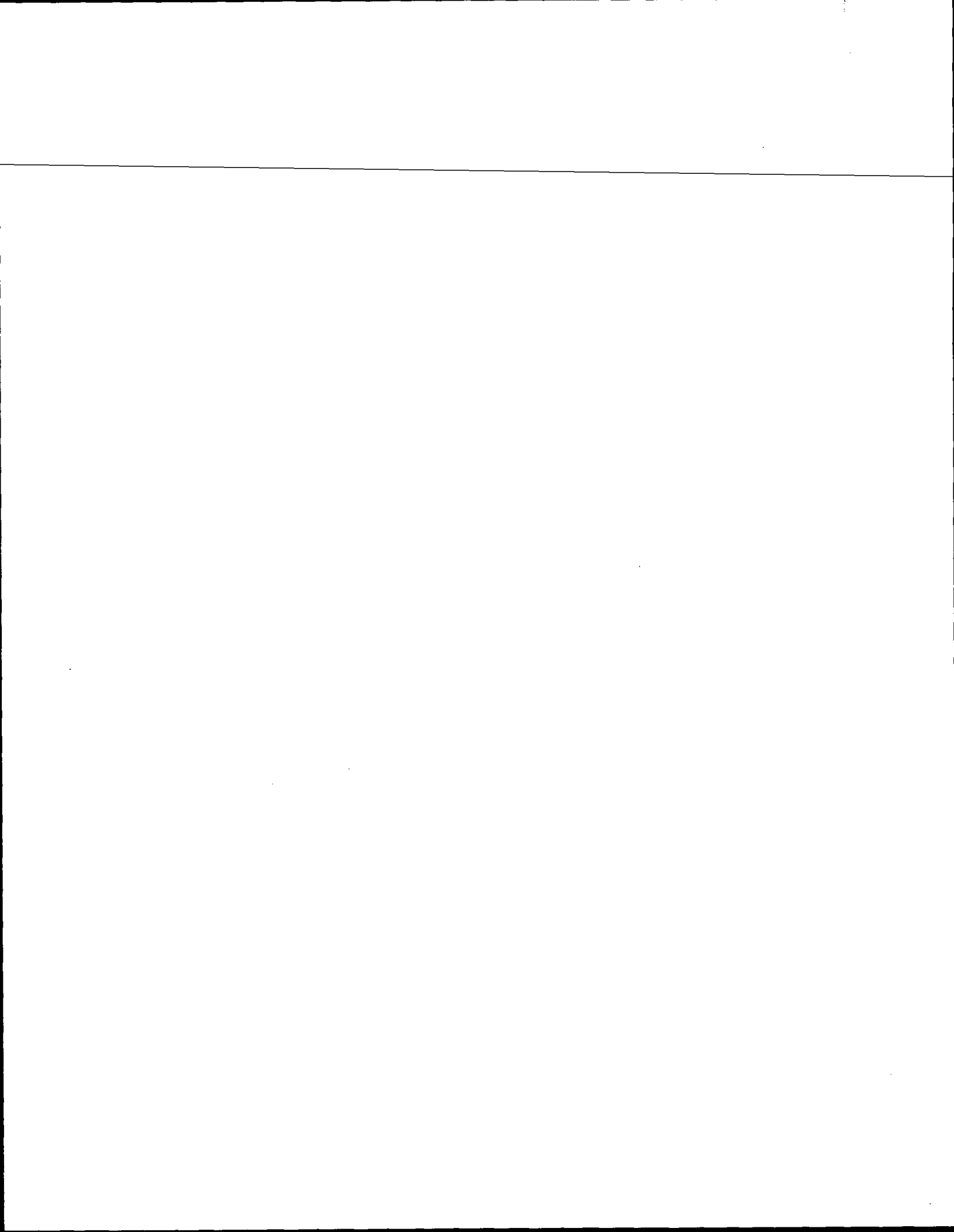
DATE 3/25/2020

TIE SKETCH

NOTE: THE CORNER LANDS 1.4'± WEST OF 5TH AVE. CENTERLINE



- SET 3/4" x 18" IRON REBAR, 1.50#/FT
- FOUND 3/4" IRON ROD
- ⊕ FOUND HARRISON (BROKEN-TOP) MONUMENT
- ~ STEEL FENCE POST
- VINYL "T" POST



ADAMS COUNTY

Survey Monument Record

TYPE OF MONUMENT: Standard Harrison

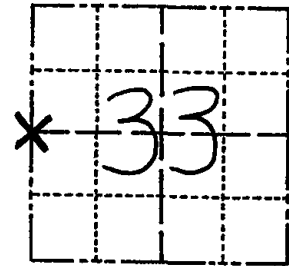
STATE PLANE COORDINATES: N _____
E _____

ELEVATION — M.S.L. DATUM: _____

THETA ANGLE: _____

FIELD BOOK: 37 PAGE 66

CORNER NO. 116
SECTION 33
TOWN 20
RANGE 7



LOCATION
(Indicated by 'X')

SEAL:



BASIS FOR MONUMENT LOCATION

(Use reverse side if necessary)

Show info such as: History of corner, with reference to Vol. and pg, dates, surveyor; exact description of monument replaced; if location computed, by taped or EDM traverse; landowner remarks, etc.

Ran EDM/T2 traverse around Sections 28 and 29, and portions of adjoining sections to determine search area.

Excavation with backhoe yielded no evidence of the original corner or any remonumentation. Could find no evidence of original bearing trees.

Re-established corner by single proportionate measure on line between adjacent section corners.

Standard Harrison set 11-4-76.

Ok 4-30-84 SS-DK

OK 11-3-79 BS-SS
TOP BROKEN - 4 NEW TIES 3-21-94 JG-SS
OK 2-12-99-JG
OK 8-25-04 SS OK 2-6-09 SS

CERTIFIED CORRECT:

Dale C. Hagen
Registered Land Surveyor
DATE: 12-2-76

TIE SKETCH

(Show at least four ties)

NOTE

Ties in trees to nail in disc.

