

33  
SECTION

20  
TOWN

07  
RANGE

# ADAMS COUNTY

COUNTY CORNER NO: 117

ROMPORTOL ID: 42007332000

## PUBLIC LAND SURVEY MONUMENT RECORD

TYPE OF MONUMENT: HARRISON (BROKEN-TOP)  
ADAMS COUNTY COORDINATES, NAD 83 (2007)

N. 290519.411

E. 572734.649

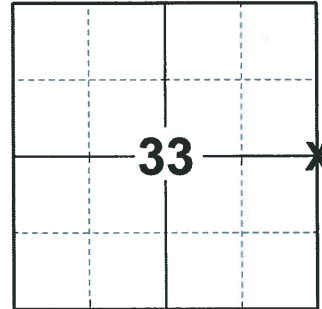
ELEVATION-      DATUM     

FIELD WORK DATE: 03/12/2020

### BASIS FOR MONUMENT LOCATION

1973 - PLS 878 SET BY RETRACEMENT OF SAM MULLEN SURVEY IN SW1/4.

2020 - PLS 2675 FOUND HARRISON (BROKEN-TOP) 6"± BELOW THE ROAD SURFACE AND 1 TIE. THE MONUMENT AGREES WITH THE TIE. ACCEPTED THE HARRISON (BROKEN-TOP) AS THE CORNER LOCATION. SET 3 NEW TIES AND MEASURED TO THE EXISTING TIE.



LOCATION  
(INDICATE CORNER BY "X")

SEAL:



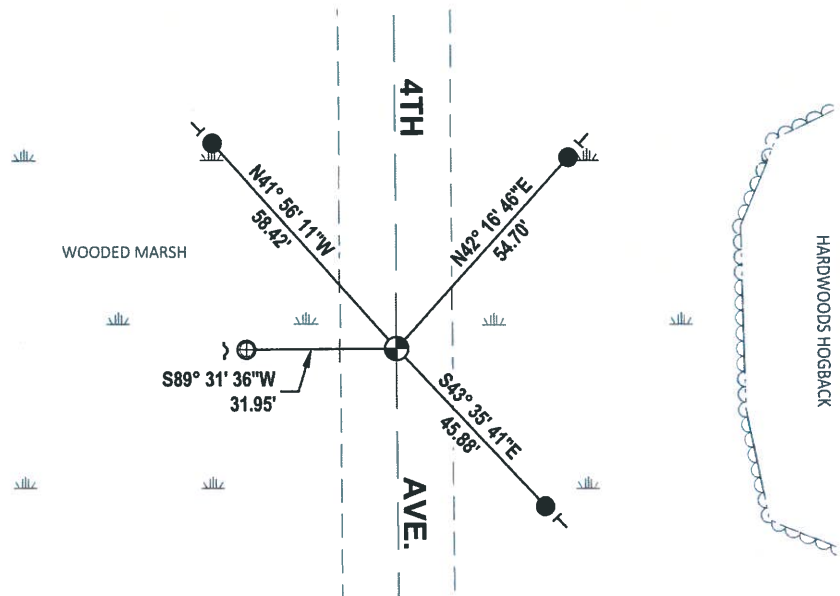
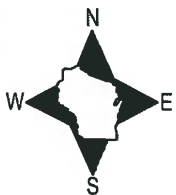
DATA SHOWN HERE ON THIS TIE SHEET IS CORRECT AND COMPLETE TO THE BEST OF MY KNOWLEDGE AND BELIEF.

PROFESSIONAL LAND SURVEYOR

DATE 3/25/2020

### - TIE SKETCH -

NOTE: THE CORNER LANDS ON THE CENTERLINE OF 4TH AVE.



- SET 3/4" x 18" IRON REBAR, 1.50#/FT
- ⊕ FOUND 1" O.D. IRON PIPE
- ⊕ FOUND HARRISON (BROKE-TOP) MONUMENT
- ┘ STEEL FENCE POST
- └ VINYL "T" POST

ADAMS COUNTY

Survey Monument Record

TYPE OF MONUMENT: 30" HARRISON

STATE PLANE COORDINATES: N \_\_\_\_\_

E \_\_\_\_\_

ELEVATION — M.S.L. DATUM: \_\_\_\_\_

THETA ANGLE: \_\_\_\_\_

FIELD BOOK: 107 PAGE 4

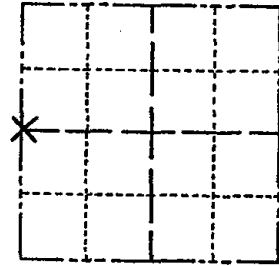
CORNER NO. 204

SECTION 34

TOWN 20

RANGE 7

117



LOCATION (Indicated by 'X')

SEAL:

BASIS FOR MONUMENT LOCATION

(Use reverse side if necessary)

Show info such as: History of corner, with reference to Vol. and pg, dates, surveyor; exact description of monument replaced; if location computed, by taped or EDM traverse; landowner remarks, etc.

Set by retracement of Sam Mullen Survey in SW 1/4.

Ok added one tie that was done prior to this check but not recorded 4-27-84 SS-DK



CERTIFIED CORRECT:

*Anthony B. Kiedrowski*  
Registered Land Surveyor

DATE: 2-22-73

HAR. SHANKS RESET 10" POPLAR 1984 SS-DK

OK 3-16-94 JG-SS

OK 2-12-99-JG

OK-6-01-04 STS

2 NEW TIES 2-6-09 SS

TIE SKETCH

(Show at least four ties)

