

35  
SECTION

20  
TOWN

07  
RANGE

# ADAMS COUNTY

COUNTY CORNER NO: 119

ROMPORTOL ID: 42007352000

## PUBLIC LAND SURVEY MONUMENT RECORD

TYPE OF MONUMENT: HARRISON (BROKEN-TOP)  
ADAMS COUNTY COORDINATES, NAD 83 (2007)

N. 290609.928

E. 583338.643

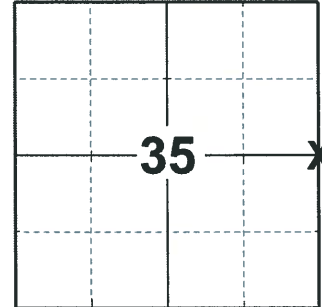
ELEVATION- - - - - DATUM - - - - -

FIELD WORK DATE: 03/11/2020

### BASIS FOR MONUMENT LOCATION

1975 - PLS 878 EXCAVATED WITH BACKHOE. FOUND SQUARED SANDSTONE, 8"X8"X10". LOWERED STONE AND PUT HARRISON MONUMENT ON TOP. NO RECORD OF STONE'S HISTORY. EDM OF ALL OF SECTION 36 VERIFIED LOCATION.

2020 - PLS 2675 FOUND HARRISON (BROKEN-TOP) 24"± BELOW THE ROAD, 1 TIE, AND 1 WITNESS. THE MONUMENT AGREES WITH THE TIE AND WITNESS. ACCEPTED THE HARRISON (BROKEN-TOP) AS THE CORNER LOCATION. SET 3 NEW TIES AND MEASURED TO THE EXISTING TIE AND WITNESS.



### LOCATION

(INDICATE CORNER BY "X")

SEAL:



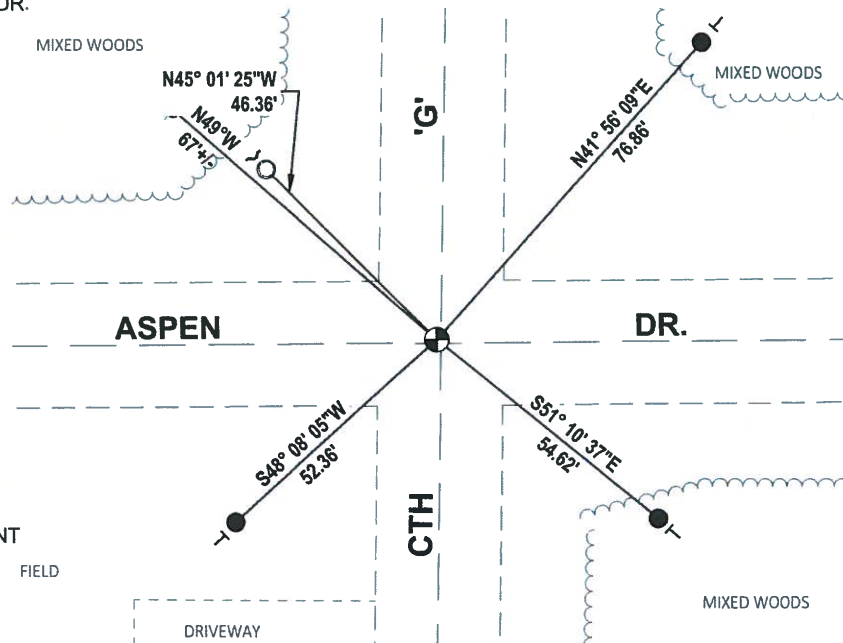
DATA SHOWN HERE ON THIS TIE SHEET IS CORRECT AND COMPLETE TO THE BEST OF MY KNOWLEDGE AND BELIEF.

PROFESSIONAL LAND SURVEYOR

DATE 3/25/2020

### - TIE SKETCH -

NOTE: THE CORNER LANDS 0.8'± WEST OF CTH 'G' CENTERLINE AND 0.7'± NORTH OF ASPEN DR. CENTERLINE



- SET 3/4" x 18" IRON REBAR, 1.50#/FT
- FOUND 1-1/4" O.D. IRON PIPE
- ⊕ FOUND HARRISON (BROKEN-TOP) MONUMENT
- ⊗ WITNESS POWER POLE
- ┘ STEEL FENCE POST
- └ VINYL "T" POST

ADAMS COUNTY

Survey Monument Record

TYPE OF MONUMENT: Harrison standard

STATE PLANE COORDINATES: N \_\_\_\_\_

E \_\_\_\_\_

ELEVATION — M.S.L. DATUM: \_\_\_\_\_

THETA ANGLE: \_\_\_\_\_

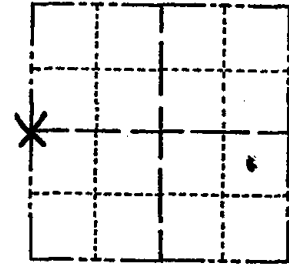
FIELD BOOK: \_\_\_\_\_ PAGE \_\_\_\_\_

CORNER NO. 662 <sup>(119)</sup>

SECTION 36

TOWN 20

RANGE 7



LOCATION  
(Indicated by 'X')

SEAL:

BASIS FOR MONUMENT LOCATION

(Use reverse side if necessary)

Show info such as: History of corner, with reference to Vol. and pg, dates, surveyor; exact description of monument replaced; if location computed, by taped or EDM traverse; landowner remarks, etc.

Excavated with backhoe. Found squared sandstone, 8" x 8" x 10". Lowered stone and put Harrison monument on top. No record of stone's History. EDM of all of section 36 verified location.

See the reverse side for new map 4-30-84



CERTIFIED CORRECT:

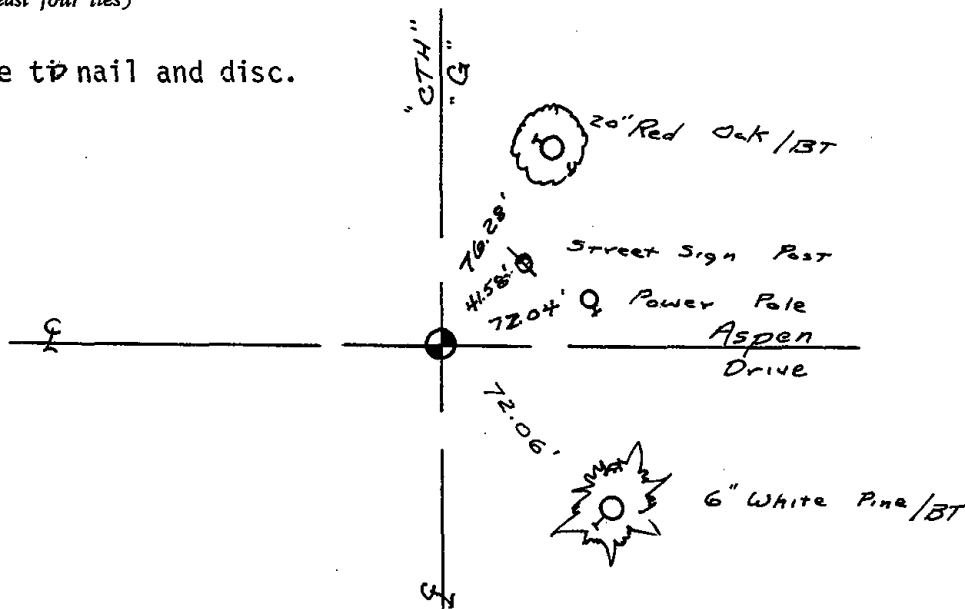
*Anthony B. Kiedrowski*  
Registered Land Surveyor

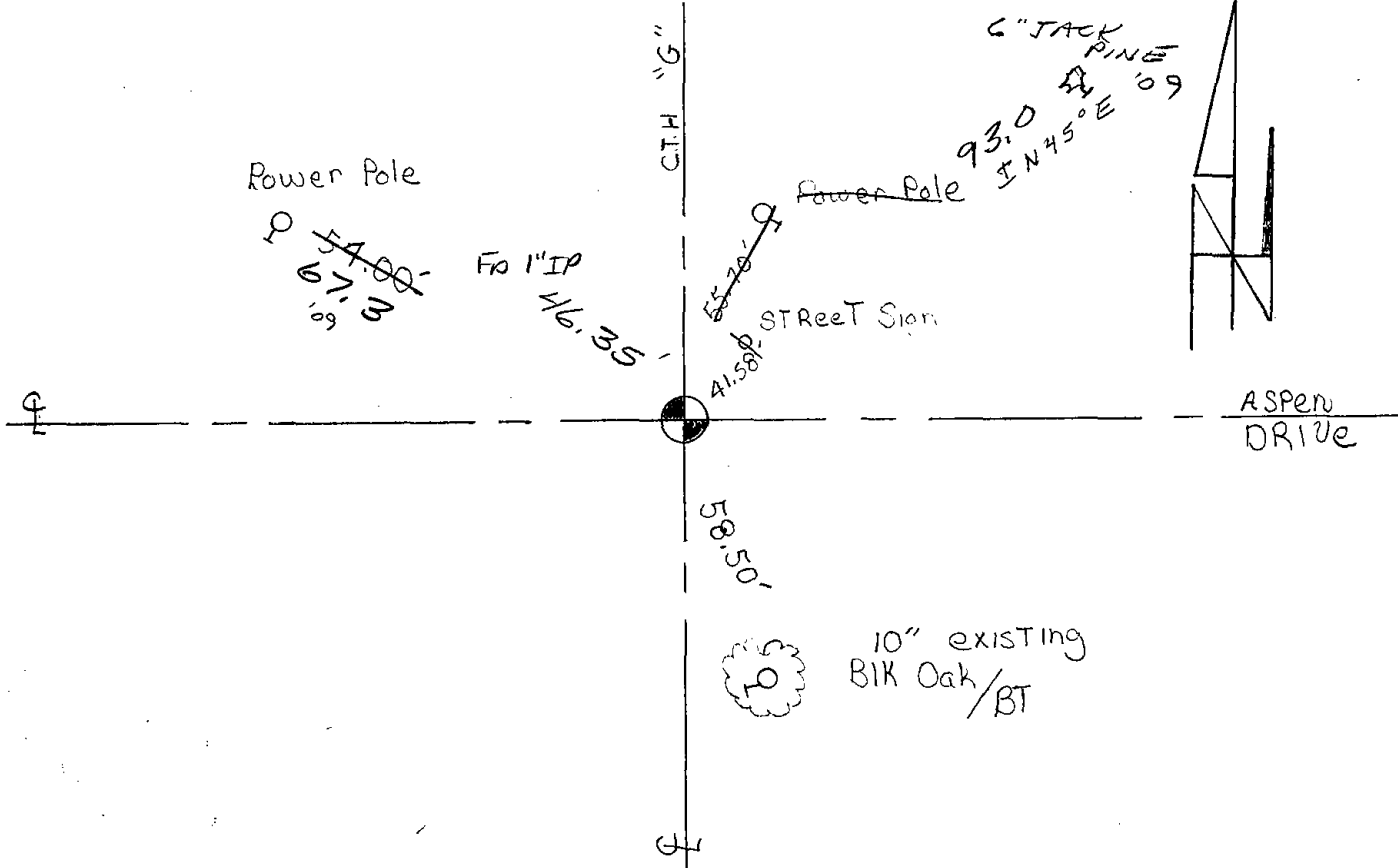
DATE: April 24, 1975

TIE SKETCH

(Show at least four ties)

Ties are to nail and disc.





Map updated on 4-30-84 SS-DK  
 OK 3 MARCH 94 CR-SS  
 OK 2-12-99 JG  
 2 NEW TIES 10-07-09