

33
SECTION

20
TOWN

07
RANGE

ADAMS COUNTY

COUNTY CORNER NO: 127

ROMPORTOL ID: 42007330000

PUBLIC LAND SURVEY MONUMENT RECORD

TYPE OF MONUMENT: HARRISON (BROKEN-TOP)
ADAMS COUNTY COORDINATES, NAD 83 (2007)

N. 287882.016

E. 572751.263

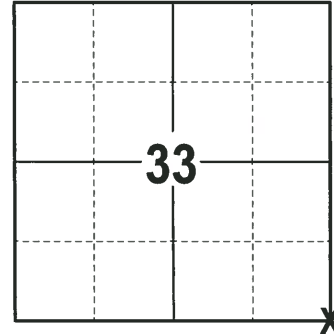
ELEVATION- DATUM

FIELD WORK DATE: 02/01/2018

BASIS FOR MONUMENT LOCATION

1973 - PLS 878 CALCULATED LOCATION BY RETRACEMENT OF SAM MULLEN'S SURVEY OF THE FENCE TO THE NORTH. VERIFIED IT IN RELATION TO STONES FOUND AT THE NW AND SE CORNERS OF THIS SECTION. SET HARRISON AND TIED OUT.

2018 - PLS 2994 FOUND HARRISON WITH BROKEN-TOP FLUSH WITH THE ROAD SURFACE, 2 TIES AND 1 WITNESS. THE MONUMENT FIT WELL WITH THE WITNESS. THE SE TIE WAS 3' OFF EXACTLY. CONSIDER A POSSIBLE ERROR IN THE DISTANCE SHOWN ON TIESHEET AND THE NW TIE HAS BEEN DISTURBED. ACCEPTED THE HARRISON WITH BROKEN-TOP AS THE CORNER. SET 3 NEW TIES AND MEASURED TO THE TIES AND WITNESS.



LOCATION
(INDICATE CORNER BY "X")

SEAL:



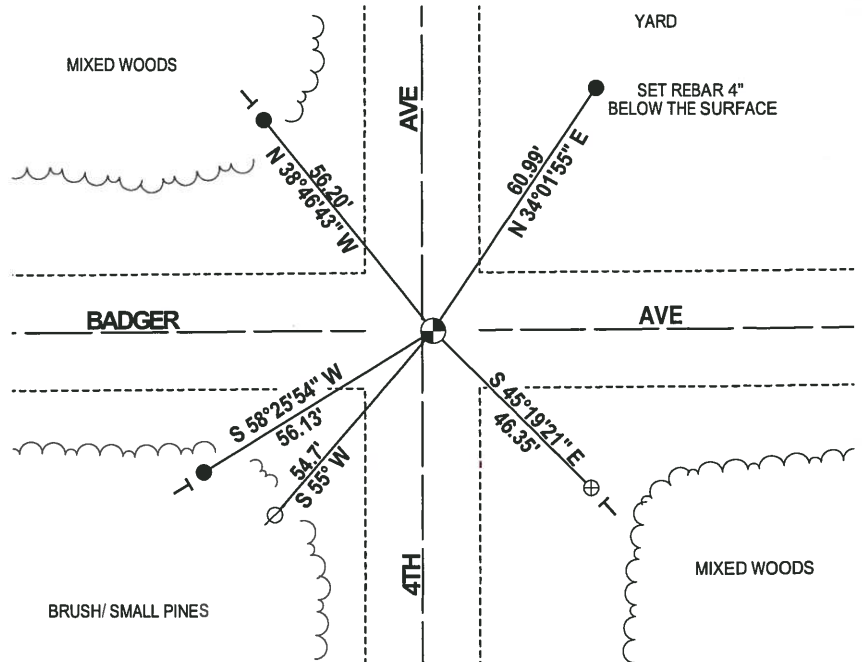
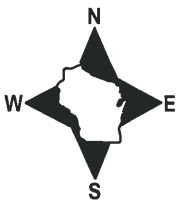
DATA SHOWN HERE ON THIS TIE SHEET IS CORRECT AND COMPLETE TO THE BEST OF MY KNOWLEDGE AND BELIEF.

PROFESSIONAL LAND SURVEYOR

DATE 3-1-18

- TIE SKETCH -

NOTE: THE CORNER FALLS 2± EAST OF THE CENTERLINE OF 4TH AVE.



- 3/4" x 18" IRON REBAR SET, 1.50#/FT
- ⊕ 2-3/8" O.D. IROD PIPE FOUND
- ⊙ HARRISON (BROKEN-TOP) FOUND
- ⊗ WITNESS POWER POLE
- | VINYL "T" POST

ADAMS COUNTY

Survey Monument Record

TYPE OF MONUMENT: Harrison standard

STATE PLANE COORDINATES: N _____

E _____

ELEVATION — M.S.L. DATUM: _____

THETA ANGLE: _____

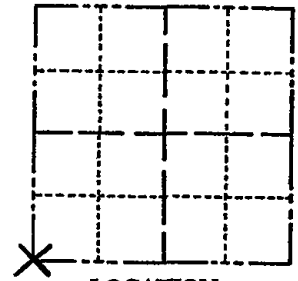
FIELD BOOK: _____ PAGE _____

CORNER NO. 203

SECTION 34

TOWN 20

RANGE 7



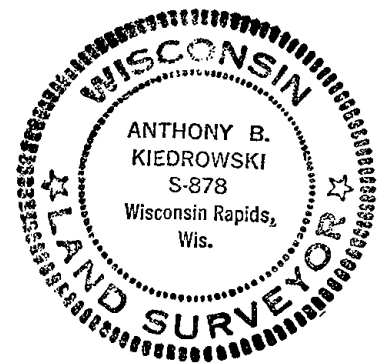
BASIS FOR MONUMENT LOCATION

(Use reverse side if necessary)

Show info such as: History of corner, with reference to Vol. and pg, dates, surveyor; exact description of monument replaced; if location computed, by taped or EDM traverse; landowner remarks, etc.

Set by retracement of Sam Mullen survey north of here. Also checked it with relation to stones found at the NW and SE corners of this section .

SEAL:



Ok 4-27-84 SS-DK

TOP BROKEN 11-3-79 85-55
OK 3-16-94 JG-SS
OK 2-12-99-JG
OK 8-25-04 SS
OK 2-6-09 SS

CERTIFIED CORRECT:

Anthony B. Kiedrowski
Registered Land Surveyor

DATE: 2-22-73

TIE SKETCH

(Show at least four ties)

