

36
SECTION

20
TOWN

07
RANGE

ADAMS COUNTY

COUNTY CORNER NO: 132

ROMPORTOL ID: 42007360020

PUBLIC LAND SURVEY MONUMENT RECORD

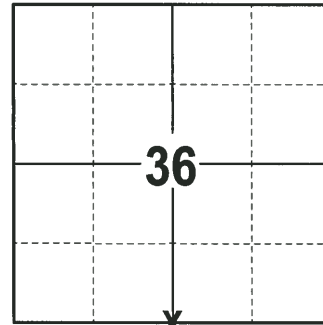
TYPE OF MONUMENT: HARRISON
ADAMS COUNTY COORDINATES, NAD 83 (2007)

N. 287997.370

E. 585943.798

ELEVATION- DATUM

FIELD WORK DATE: 02/02/2018



LOCATION
(INDICATE CORNER BY "X")

SEAL:



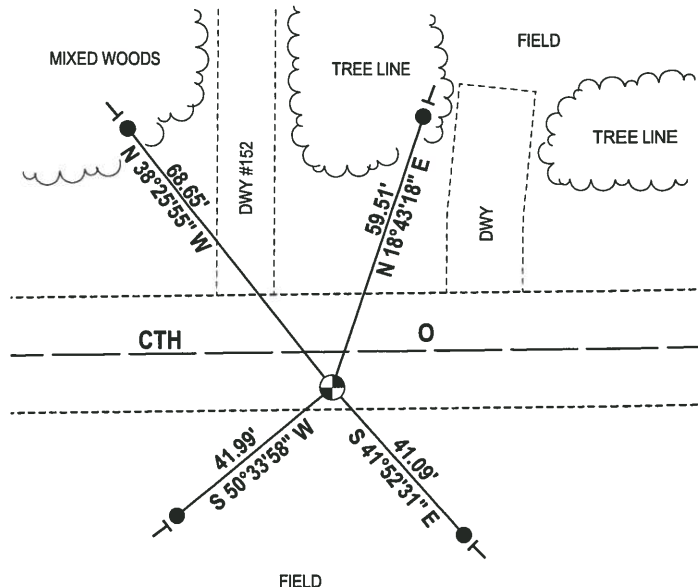
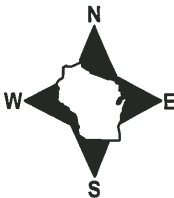
DATA SHOWN HERE ON THIS TIE SHEET IS CORRECT AND COMPLETE TO THE BEST OF MY KNOWLEDGE AND BELIEF.

PROFESSIONAL LAND SURVEYOR

DATE 3-1-18

- TIE SKETCH -

NOTE: THE CORNER FALLS 7± SOUTH OF THE CENTERLINE OF CTH O.



- 3/4" x 18" IRON REBAR SET, 1.50#/FT
- ⊕ HARRISON FOUND
- VINYL "T" POST

ADAMS COUNTY

Survey Monument Record

TYPE OF MONUMENT: Harrison Monument

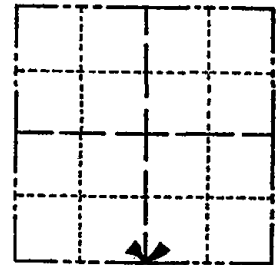
STATE PLANE COORDINATES: N _____
E _____

ELEVATION — M.S.L. DATUM: _____

THETA ANGLE: _____

FIELD BOOK: _____ PAGE _____

CORNER NO. 661
SECTION 36
TOWN 20 N
RANGE 7 E



LOCATION
(Indicated by 'X')

SEAL:

BASIS FOR MONUMENT LOCATION

(Use reverse side if necessary)

Show info such as: History of corner, with reference to Vol. and pg, dates, surveyor; exact description of monument replaced; if location computed, by taped or EDM traverse; landowner remarks, etc.

Ran EDM/transit traverse around Section 35 and Section 36.

Could find no evidence of the South Quarter corner of Section 36 or any accessory monuments.

Set corner equidistant and on line between adjacent section corners.



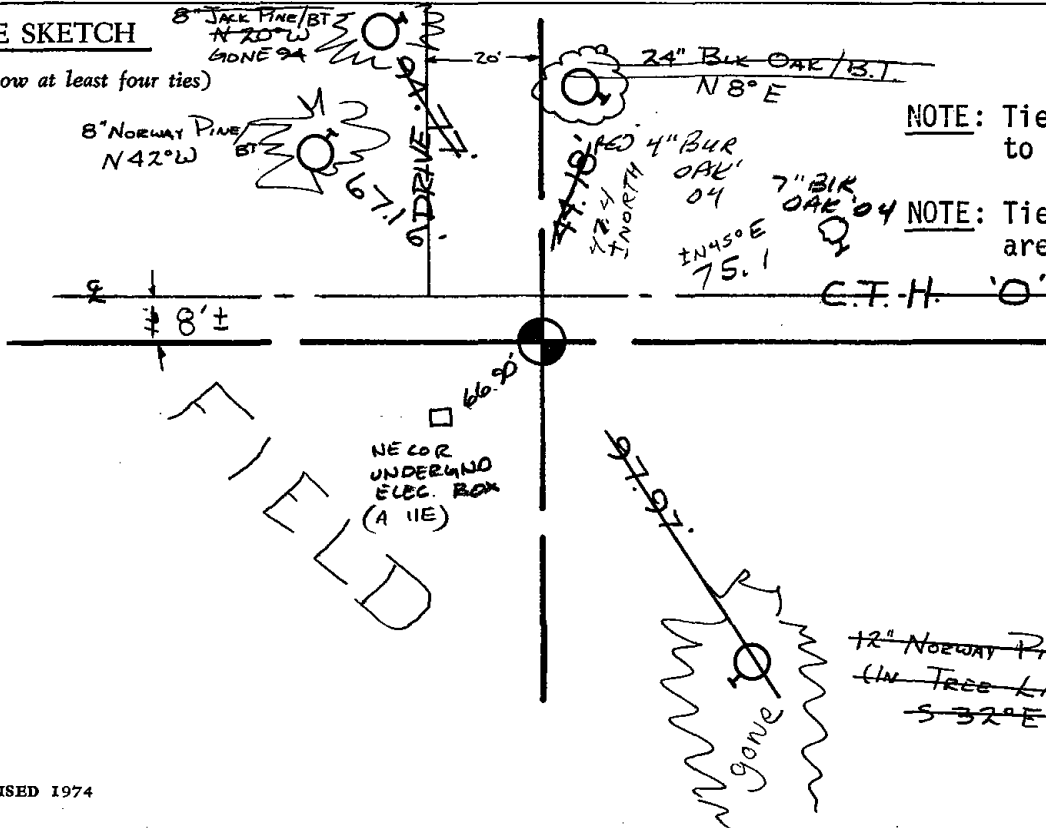
CERTIFIED CORRECT:

Dale C. Hagen
Registered Land Surveyor
DATE: May 5, 1975

OK 3-19-79 RN-DTW
1 gone no new 4-30-84 SS-DK
1 NEW TIE 2 MARCH 94 SS-CR
OK 2-12-99 - JG
2 NEW TIES 7-6-04 SS OK 2-6-09 SS

TIE SKETCH

(Show at least four ties)



NOTE: Ties in trees to nail in disc.

NOTE: Ties marked BT are blazed and scribed with BT.