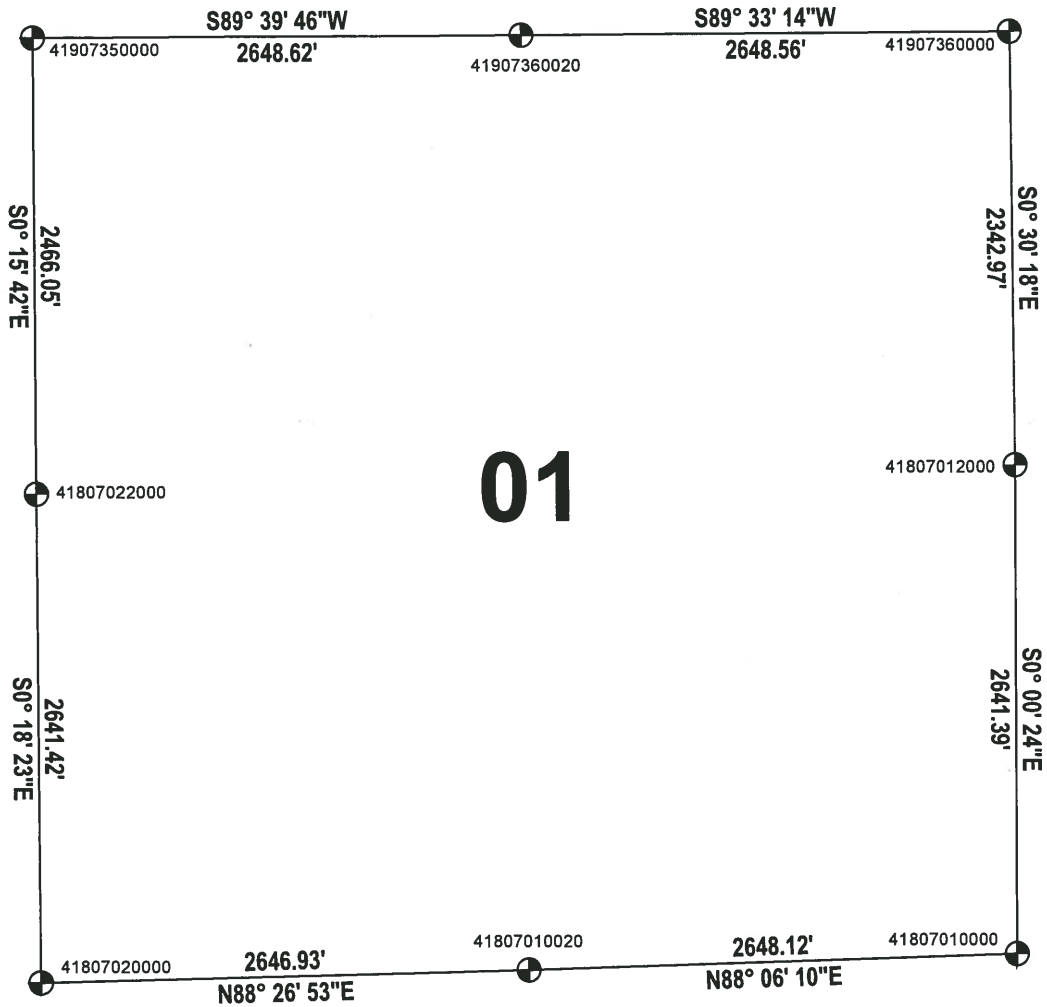


ADAMS COUNTY

SECTION SUMMARY

THIS MAP IS TO BE USED FOR REFERENCE ONLY. ADAMS COUNTY ASSUMES NO LEGAL RESPONSIBILITY FOR THE ACCURACY OF THE INFORMATION CONTAINED HEREIN.

SECTION: 01
 TOWNSHIP: 18
 RANGE: 07
RICHFIELD
OFF-VILLAGE TOWN



ADAMS COUNTY COORIDINATE SYSTEM NAD83 (2007)			
NUMBER	NORTHING	EASTING	DESCRIPTION
41807010020	251027.219	586021.526	HARRISON
41807022000	253596.921	583361.439	RAILROAD SPIKE
41807020000	250955.537	583375.569	RAILROAD SPIKE
41807010000	251114.889	588668.195	HARRISON
41807012000	253756.274	588667.890	HARRISON BROKEN TOP
41907360000	256099.149	588647.234	HARRISON BROKEN TOP
41907350000	256062.943	583350.182	HARRISON
41907360020	256078.526	585998.756	HARRISON

