

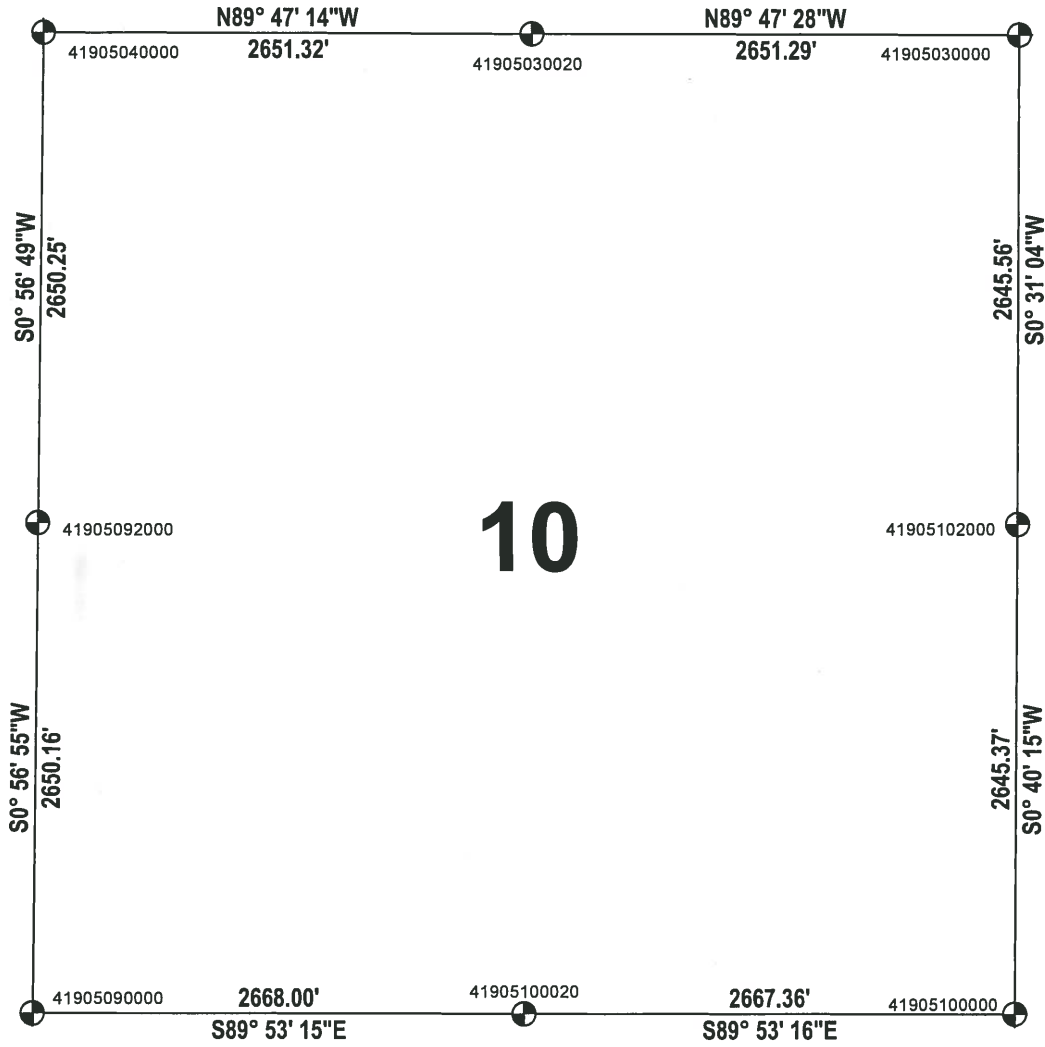
ADAMS COUNTY

SECTION SUMMARY

SECTION: 10
 TOWNSHIP: 19
 RANGE: 05

MONROE
 CITY-VILLAGE, TOWN

THIS MAP IS TO BE USED FOR REFERENCE ONLY. ADAMS COUNTY ASSUMES NO LEGAL RESPONSIBILITY FOR THE ACCURACY OF THE INFORMATION CONTAINED HEREIN.



10

ADAMS COUNTY COORIDINATE SYSTEM NAD83 (2007)			
NUMBER	NORTHING	EASTING	DESCRIPTION
41905030000	282210.733	514975.808	HARRISON BROKEN TOP
41905030020	282220.397	512324.540	HARRISON
41905040000	282230.243	509673.237	HARRISON BROKEN TOP
41905102000	279565.279	514951.899	HARRISON
41905100000	276920.095	514920.923	HARRISON BROKEN TOP
41905100020	276925.314	512253.566	HARRISON
41905092000	279580.351	509629.443	1-1/4" IRON ROD
41905090000	276930.552	509585.574	HARRISON

