

ADAMS COUNTY

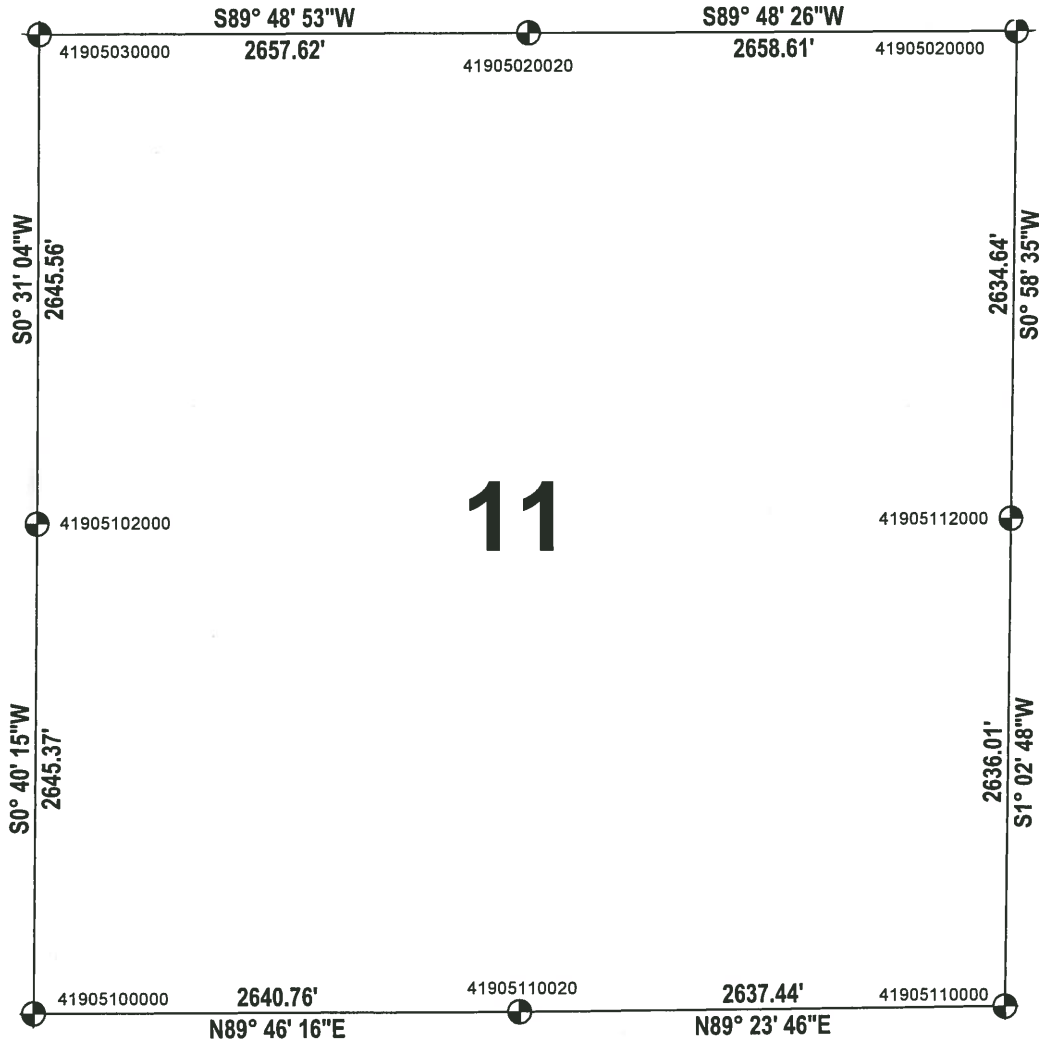
SECTION SUMMARY

SECTION: 11
 TOWNSHIP: 19
 RANGE: 05

MONROE

CITY, VILLAGE, TOWN

THIS MAP IS TO BE USED FOR REFERENCE ONLY. ADAMS COUNTY ASSUMES NO LEGAL RESPONSIBILITY FOR THE ACCURACY OF THE INFORMATION CONTAINED HEREIN.



ADAMS COUNTY COORDINATE SYSTEM NAD83 (2007)			
NUMBER	NORTHING	EASTING	DESCRIPTION
41905020020	282219.331	517633.413	HARRISON
41905020000	282228.275	520292.004	HARRISON
41905030000	282210.733	514975.808	HARRISON BROKEN TOP
41905110000	276958.450	520198.955	HARRISON BROKEN TOP
41905112000	279594.016	520247.103	HARRISON BROKEN TOP
41905110020	276930.649	517561.660	HARRISON BROKEN TOP
41905102000	279565.279	514951.899	HARRISON
41905100000	276920.095	514920.923	HARRISON BROKEN TOP

