

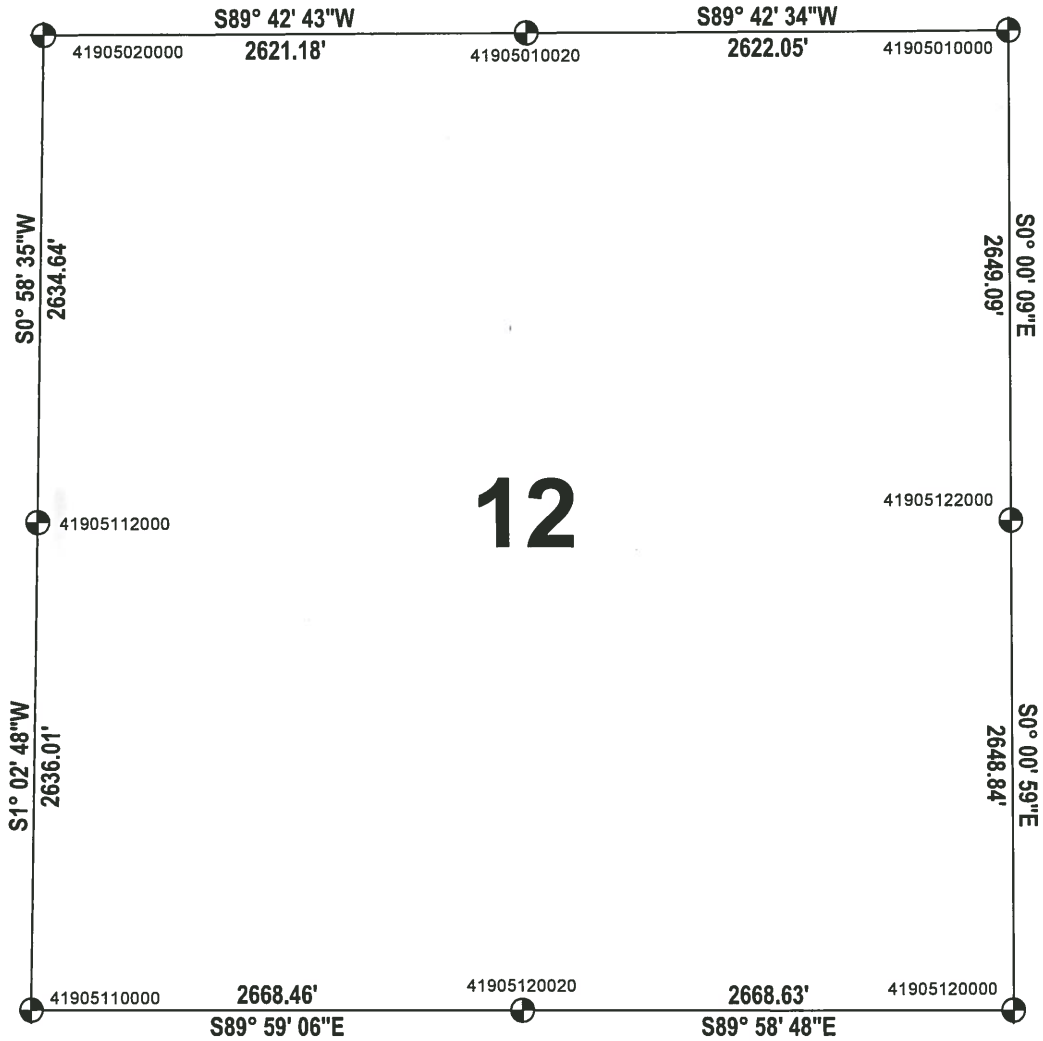
ADAMS COUNTY

SECTION SUMMARY

THIS MAP IS TO BE USED FOR REFERENCE ONLY. ADAMS COUNTY ASSUMES NO LEGAL RESPONSIBILITY FOR THE ACCURACY OF THE INFORMATION CONTAINED HEREIN.

SECTION: 12
 TOWNSHIP: 19
 RANGE: 05

MONROE
 CITY, VILLAGE, TOWN



12

ADAMS COUNTY COORDINATE SYSTEM NAD83 (2007)			
NUMBER	NORTHING	EASTING	DESCRIPTION
41905010000	282254.745	525535.168	HARRISON
41905120000	276956.817	525536.040	HARRISON
41905122000	279605.653	525535.284	HARRISON
41905010020	282241.449	522913.147	HARRISON
41905020000	282228.275	520292.004	HARRISON
41907120020	276957.748	522867.415	HARRISON BROKEN TOP
41905110000	276958.450	520198.955	HARRISON BROKEN TOP
41905112000	279594.016	520247.103	HARRISON BROKEN TOP

