



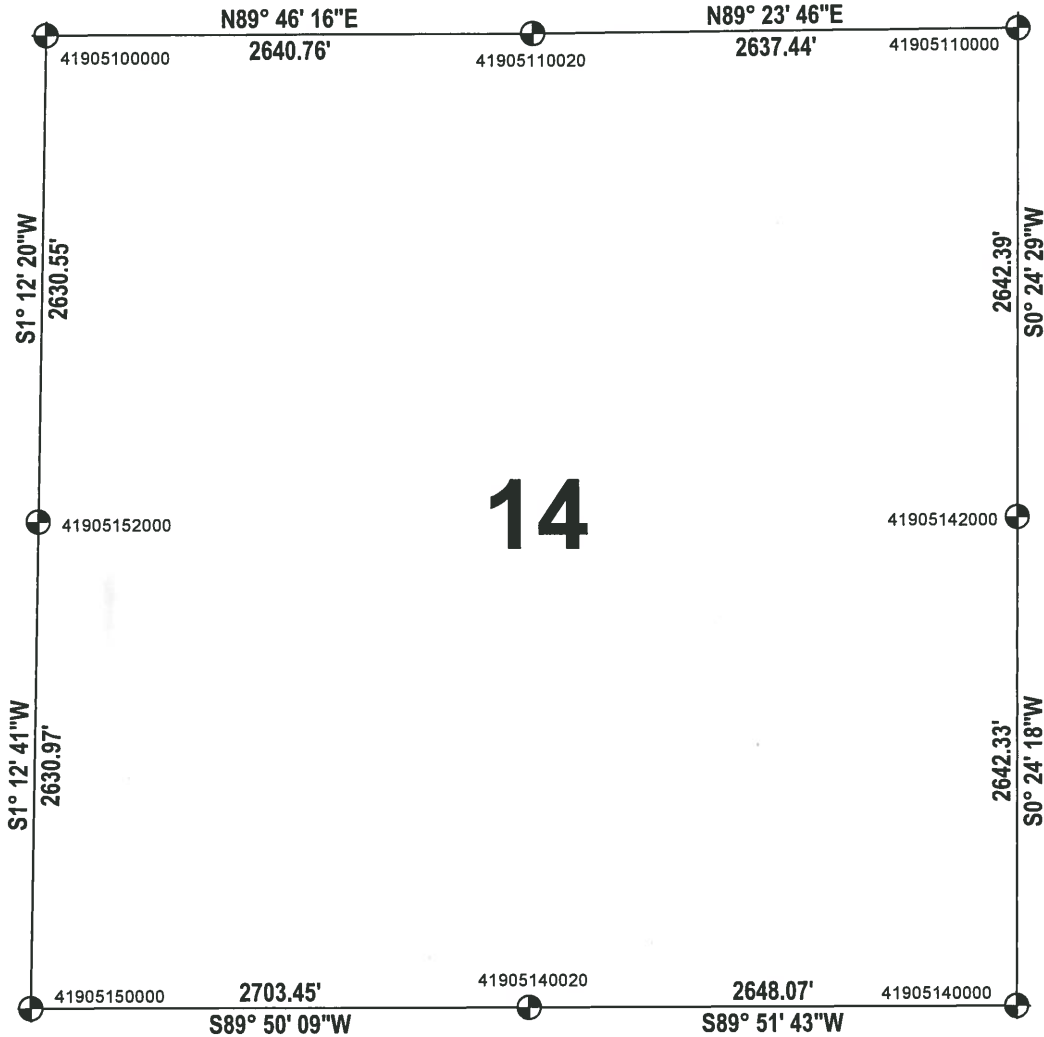
ADAMS COUNTY

SECTION SUMMARY

THIS MAP IS TO BE USED FOR REFERENCE ONLY. ADAMS COUNTY ASSUMES NO LEGAL RESPONSIBILITY FOR THE ACCURACY OF THE INFORMATION CONTAINED HEREIN.

SECTION: 14
 TOWNSHIP: 19
 RANGE: 05

MONROE
 CITY, VILLAGE, TOWN



14

ADAMS COUNTY COORDINATE SYSTEM NAD83 (2007)			
NUMBER	NORTHING	EASTING	DESCRIPTION
41905140020	271667.488	517513.399	HARRISON
41905110000	276958.450	520198.955	HARRISON BROKEN TOP
41905110020	276930.649	517561.660	HARRISON BROKEN TOP
41905100000	276920.095	514920.923	HARRISON BROKEN TOP
41905142000	274316.128	520180.137	HARRISON
41905152000	274290.129	514865.580	HARRISON
41905140000	271673.866	520161.457	HARRISON
41905150000	271659.748	514809.959	HARRISON

