



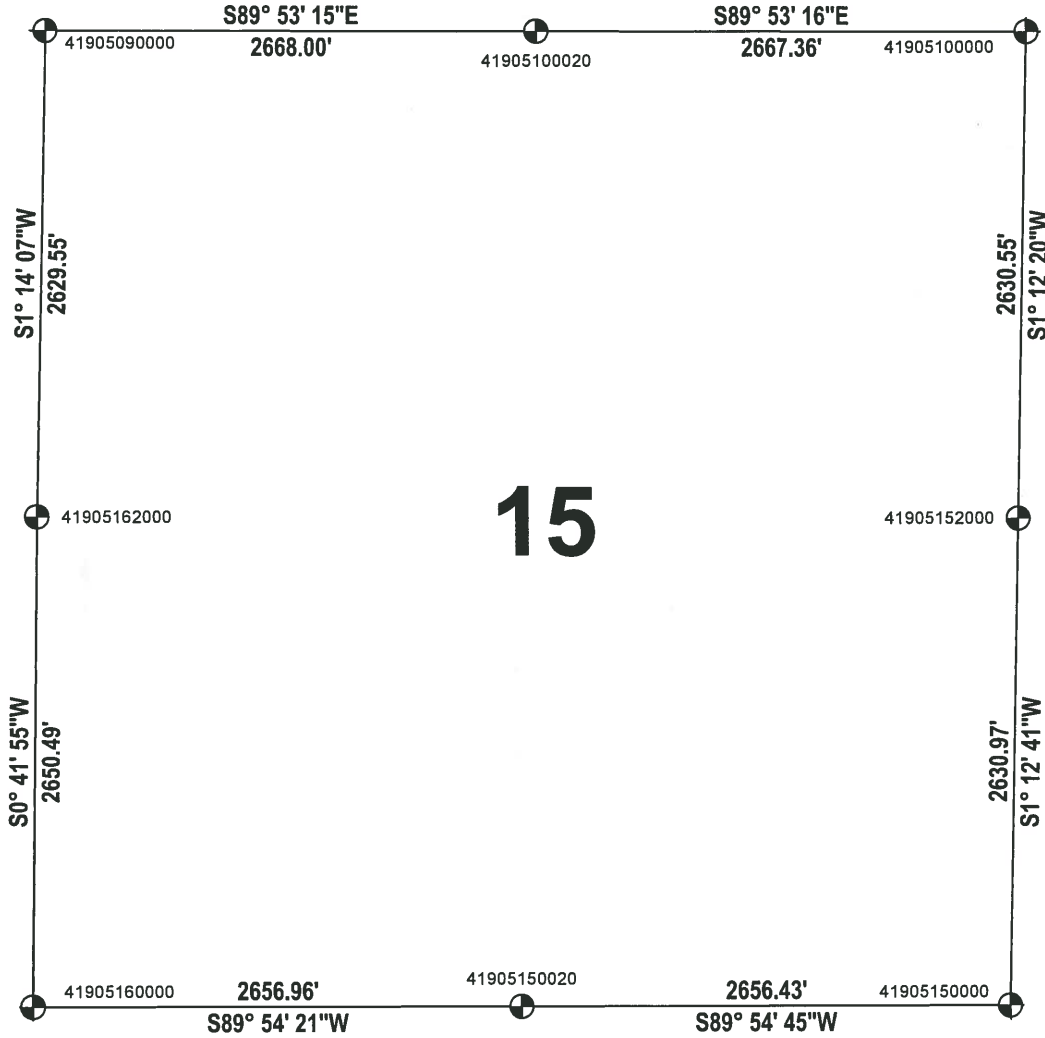
ADAMS COUNTY

SECTION SUMMARY

SECTION: 15
 TOWNSHIP: 19
 RANGE: 05

MONROE
 CITY-VILLAGE, TOWN

THIS MAP IS TO BE USED FOR REFERENCE ONLY. ADAMS COUNTY ASSUMES NO LEGAL RESPONSIBILITY FOR THE ACCURACY OF THE INFORMATION CONTAINED HEREIN.



ADAMS COUNTY COORDINATE SYSTEM NAD83 (2007)			
NUMBER	NORTHING	EASTING	DESCRIPTION
41905100000	276920.095	514920.923	HARRISON BROKEN TOP
41905100020	276925.314	512253.566	HARRISON
41905090000	276930.552	509585.574	HARRISON
41905152000	274290.129	514865.580	HARRISON
41905150000	271659.748	514809.959	HARRISON
41905150020	271655.691	512153.532	HARRISON
41905162000	274301.613	509528.888	HARRISON
41905160000	271651.322	509496.574	1-1/4" O.D. IRON PIPE

