



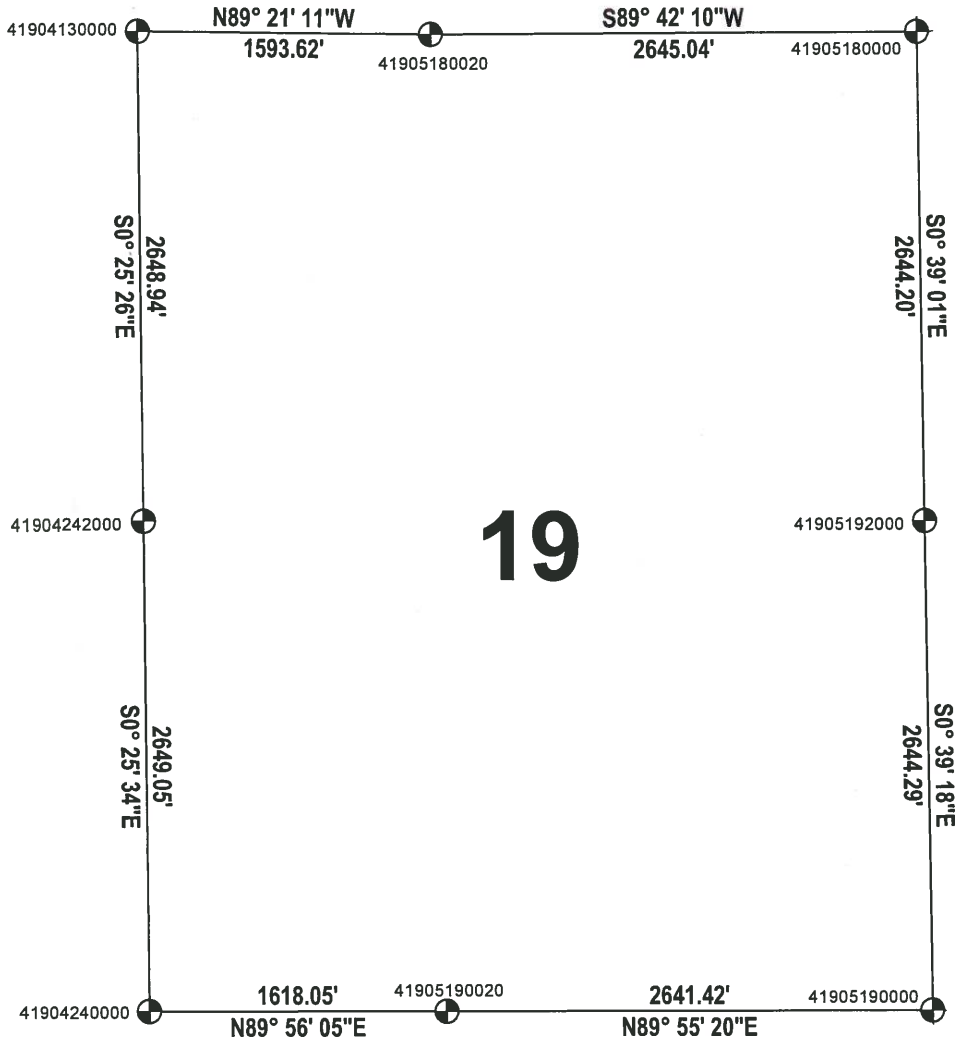
ADAMS COUNTY

SECTION SUMMARY

SECTION: 19
 TOWNSHIP: 19
 RANGE: 05

MONROE
 CITY-VILLAGE, TOWN

THIS MAP IS TO BE USED FOR REFERENCE ONLY. ADAMS COUNTY ASSUMES NO LEGAL RESPONSIBILITY FOR THE ACCURACY OF THE INFORMATION CONTAINED HEREIN.



| ADAMS COUNTY COORDINATE SYSTEM NAD83 (2007) | | | |
|---------------------------------------------|------------|------------|-----------------------|
| NUMBER | NORTHING | EASTING | DESCRIPTION |
| 41904130000 | 271661.720 | 494677.090 | HARRISON BROKEN TOP |
| 41905180000 | 271657.446 | 498915.611 | HARRISON |
| 41905180020 | 271643.725 | 496270.609 | HARRISON BROKEN TOP |
| 41905190020 | 266365.715 | 496334.433 | 1-1/2" O.D. IRON PIPE |
| 41905192000 | 269013.419 | 498945.621 | HARRISON BROKEN TOP |
| 41905190000 | 266369.299 | 498975.854 | HARRISON BROKEN TOP |
| 41904242000 | 269012.848 | 494696.689 | HARRISON BROKEN TOP |
| 41904240000 | 266363.871 | 494716.384 | CALCULATED POSITION |

