



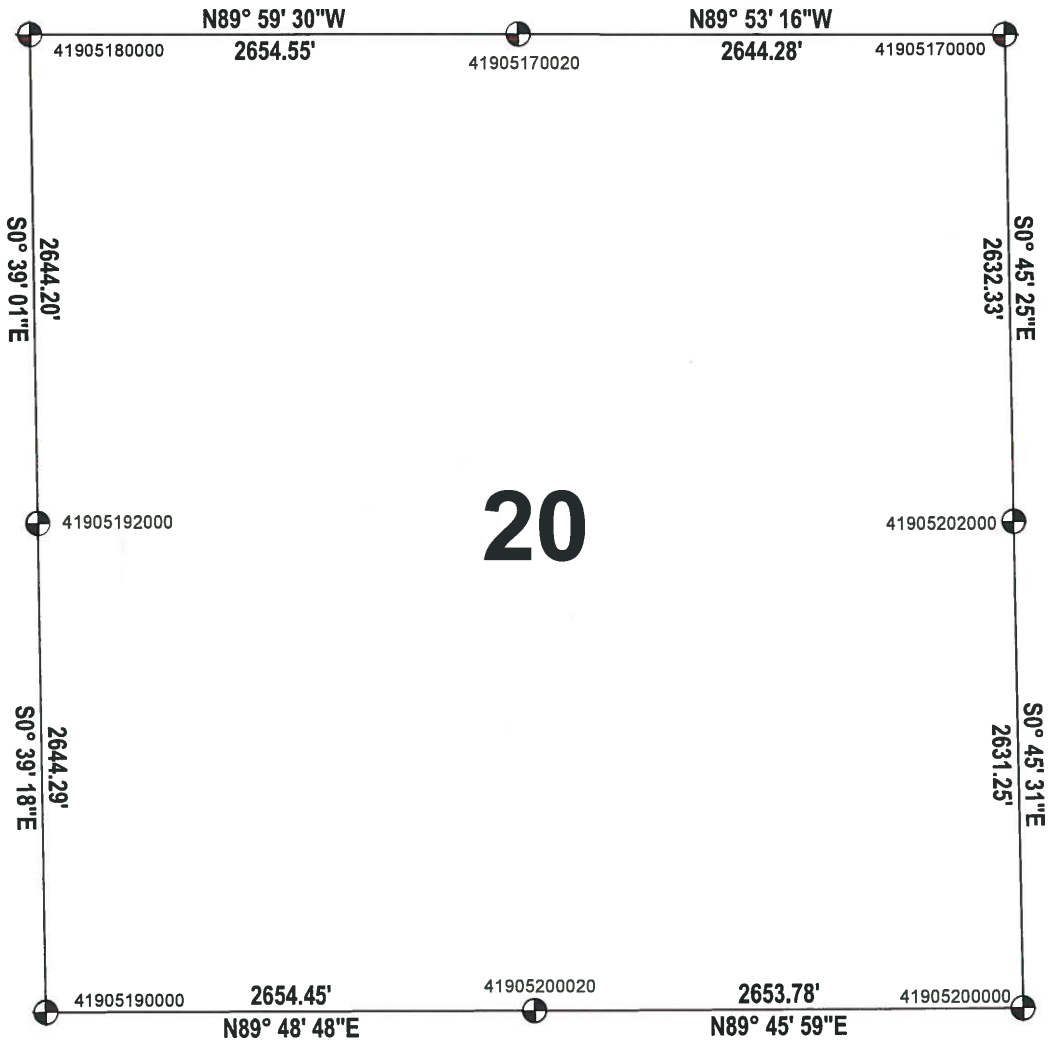
ADAMS COUNTY

SECTION SUMMARY

SECTION: 20
 TOWNSHIP: 19
 RANGE: 05

THIS MAP IS TO BE USED FOR REFERENCE ONLY. ADAMS COUNTY ASSUMES NO LEGAL RESPONSIBILITY FOR THE ACCURACY OF THE INFORMATION CONTAINED HEREIN.

MONROE
 CITY-VILLAGE, TOWN



ADAMS COUNTY COORIDINATE SYSTEM NAD83 (2007)			
NUMBER	NORTHING	EASTING	DESCRIPTION
41905170000	271651.889	504214.434	HARRISON
41907170020	271657.065	501570.162	HARRISON
41905180000	271657.446	498915.611	HARRISON
41905202000	269019.787	504249.208	HARRISON
41905200000	266388.764	504284.042	HARRISON
41905200020	266377.949	501630.287	HARRISON
41905192000	269013.419	498945.621	HARRISON BROKEN TOP
41905190000	266369.299	498975.854	HARRISON BROKEN TOP

