



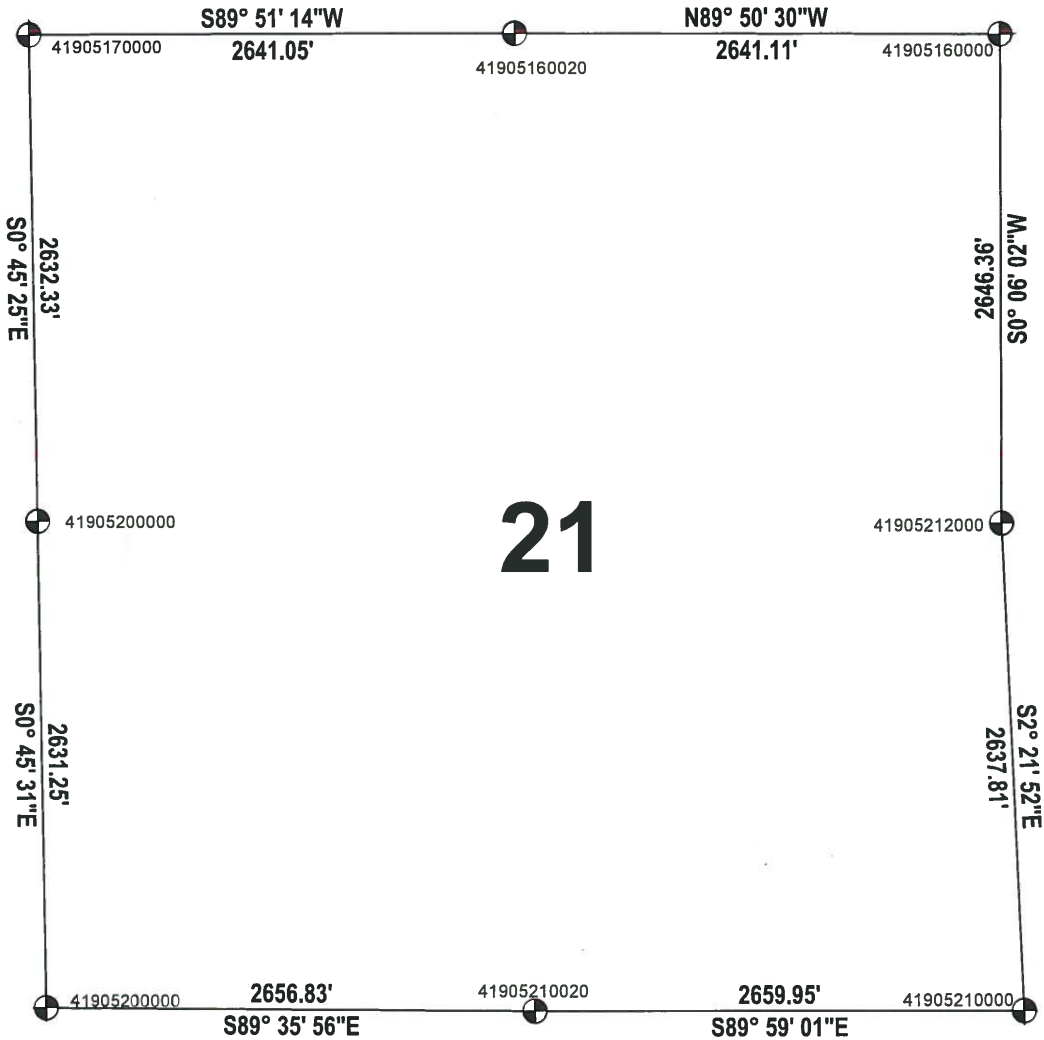
# ADAMS COUNTY

## SECTION SUMMARY

SECTION: 21  
 TOWNSHIP: 19  
 RANGE: 05

**MONROE**  
 CITY-VILLAGE, TOWN

THIS MAP IS TO BE USED FOR REFERENCE ONLY. ADAMS COUNTY ASSUMES NO LEGAL RESPONSIBILITY FOR THE ACCURACY OF THE INFORMATION CONTAINED HEREIN.



ADAMS COUNTY COORDINATE SYSTEM NAD83 (2007)			
NUMBER	NORTHING	EASTING	DESCRIPTION
41905160000	271651.322	509496.574	1-1/4" O.D. IRON PIPE
41905160020	271658.624	506855.473	1-1/4" IRON ROD
41905170000	271651.889	504214.434	HARRISON
41905212000	269004.969	509491.933	HARRISON
41905210000	266369.403	509600.757	HARRISON
41905210020	266370.160	506940.805	HARRISON
41905202000	269019.787	504249.208	HARRISON
41905200000	266388.764	504284.042	HARRISON

