

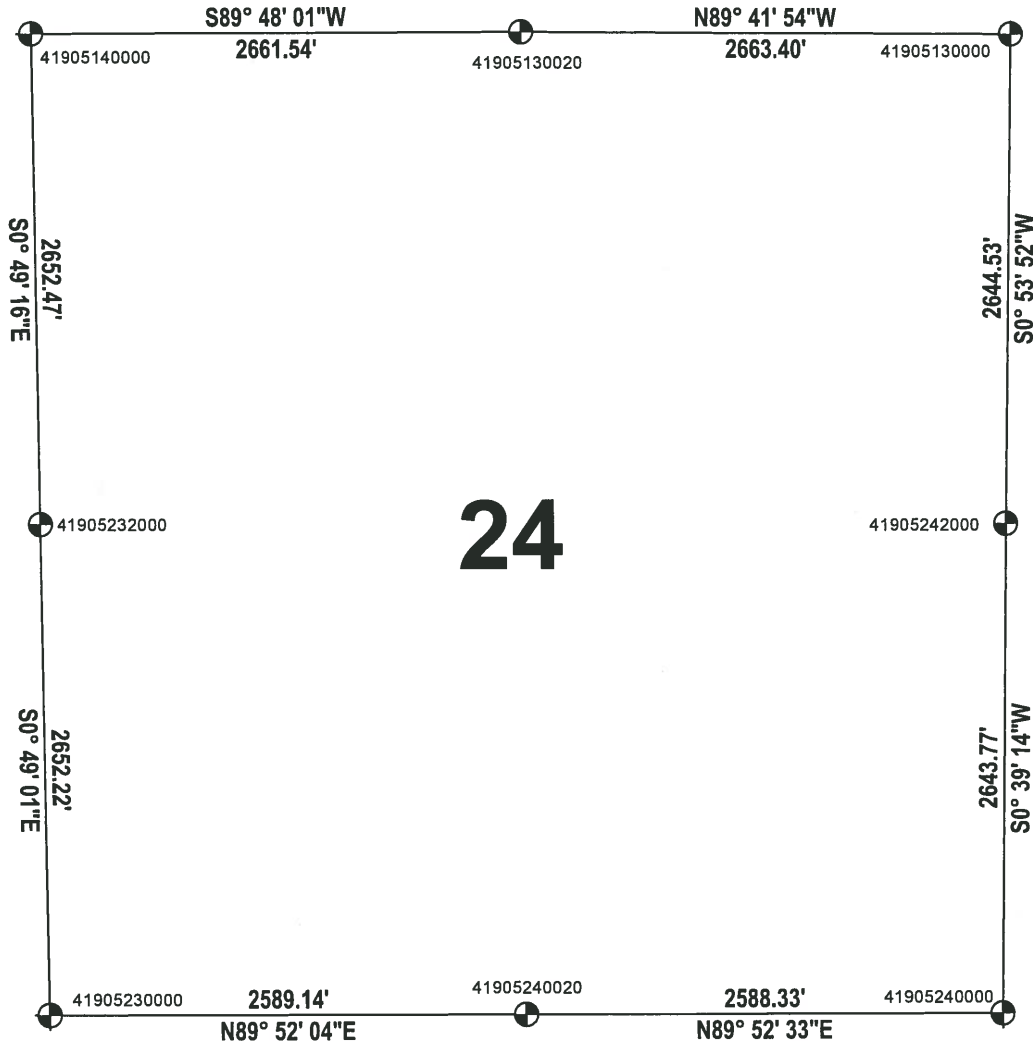
# ADAMS COUNTY

## SECTION SUMMARY

THIS MAP IS TO BE USED FOR REFERENCE ONLY. ADAMS COUNTY ASSUMES NO LEGAL RESPONSIBILITY FOR THE ACCURACY OF THE INFORMATION CONTAINED HEREIN.

SECTION: 24  
 TOWNSHIP: 19  
 RANGE: 05

**MONROE**  
 CITY, VILLAGE, TOWN



ADAMS COUNTY COORDINATE SYSTEM NAD83 (2007)			
NUMBER	NORTHING	EASTING	DESCRIPTION
41905130000	271669.113	525486.346	HARRISON
41905240000	266381.308	525414.738	HARRISON
41905242000	269024.903	525444.907	HARRISON
41905130020	271683.141	522822.979	HARRISON
41905140000	271673.866	520161.457	HARRISON
41905240020	266375.700	522826.414	HARRISON
41905232000	269021.671	520199.468	HARRISON
41905230000	266369.724	520237.279	HARRISON

