



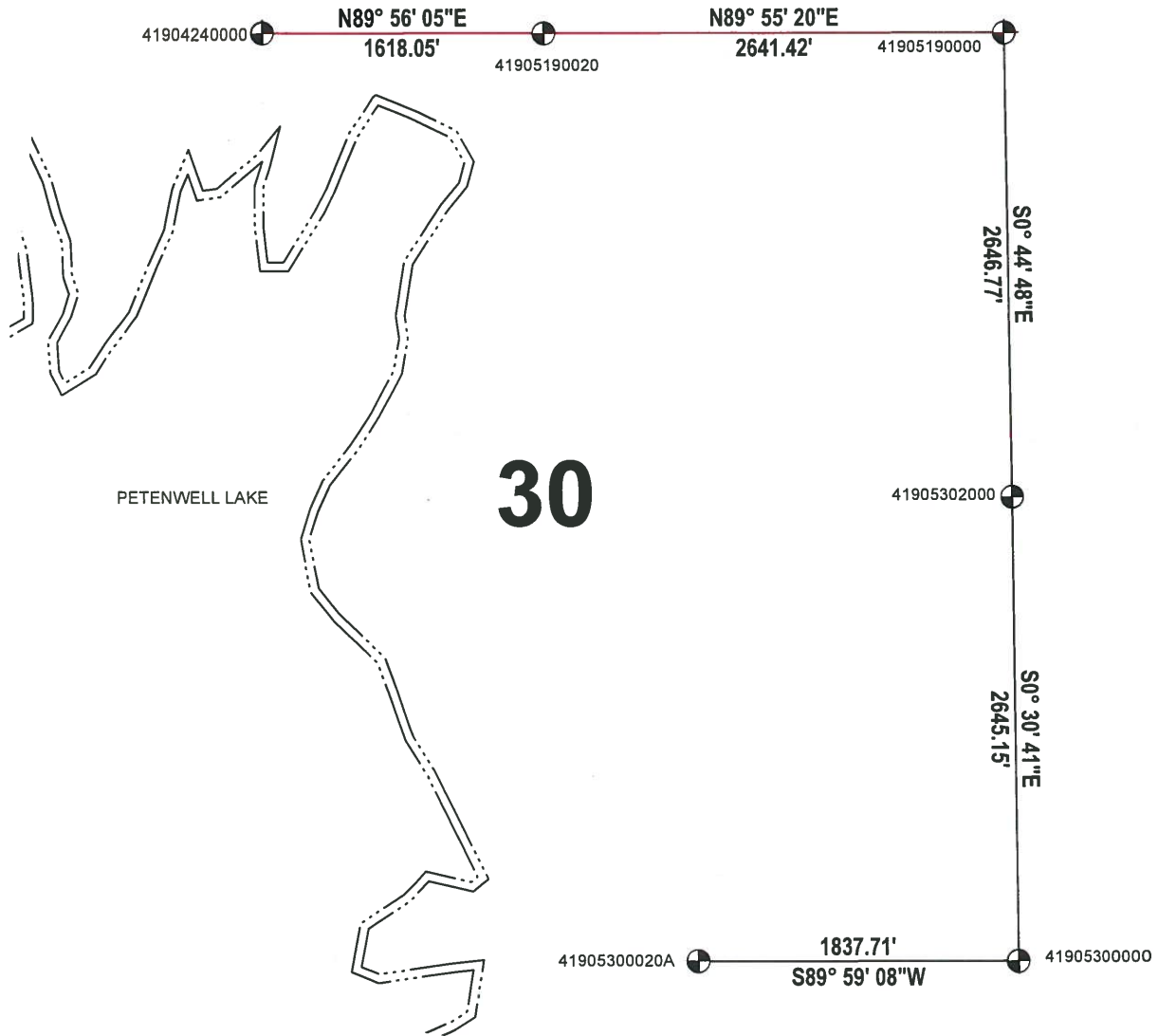
# ADAMS COUNTY

## SECTION SUMMARY

SECTION: 30  
 TOWNSHIP: 19  
 RANGE: 05

THIS MAP IS TO BE USED FOR REFERENCE ONLY. ADAMS COUNTY ASSUMES NO LEGAL RESPONSIBILITY FOR THE ACCURACY OF THE INFORMATION CONTAINED HEREIN.

**MONROE**  
 CITY-VILLAGE TOWN



ADAMS COUNTY COORDINATE SYSTEM NAD83 (2007)			
NUMBER	NORTHING	EASTING	DESCRIPTION
41905190020	266365.715	496334.433	1-1/2" O.D. IRON PIPE
41905190000	266369.299	498975.854	HARRISON BROKEN TOP
41905302000	263722.751	499010.347	HARRISON BROKEN TOP
41905300000	261077.703	499033.960	HARRISON
41904240000	266363.871	494716.384	CALCULATED POSITION
41905300020A	261077.240	497196.248	2-3/8" O.D. IRON PIPE W/ALUMINUM CAP

