



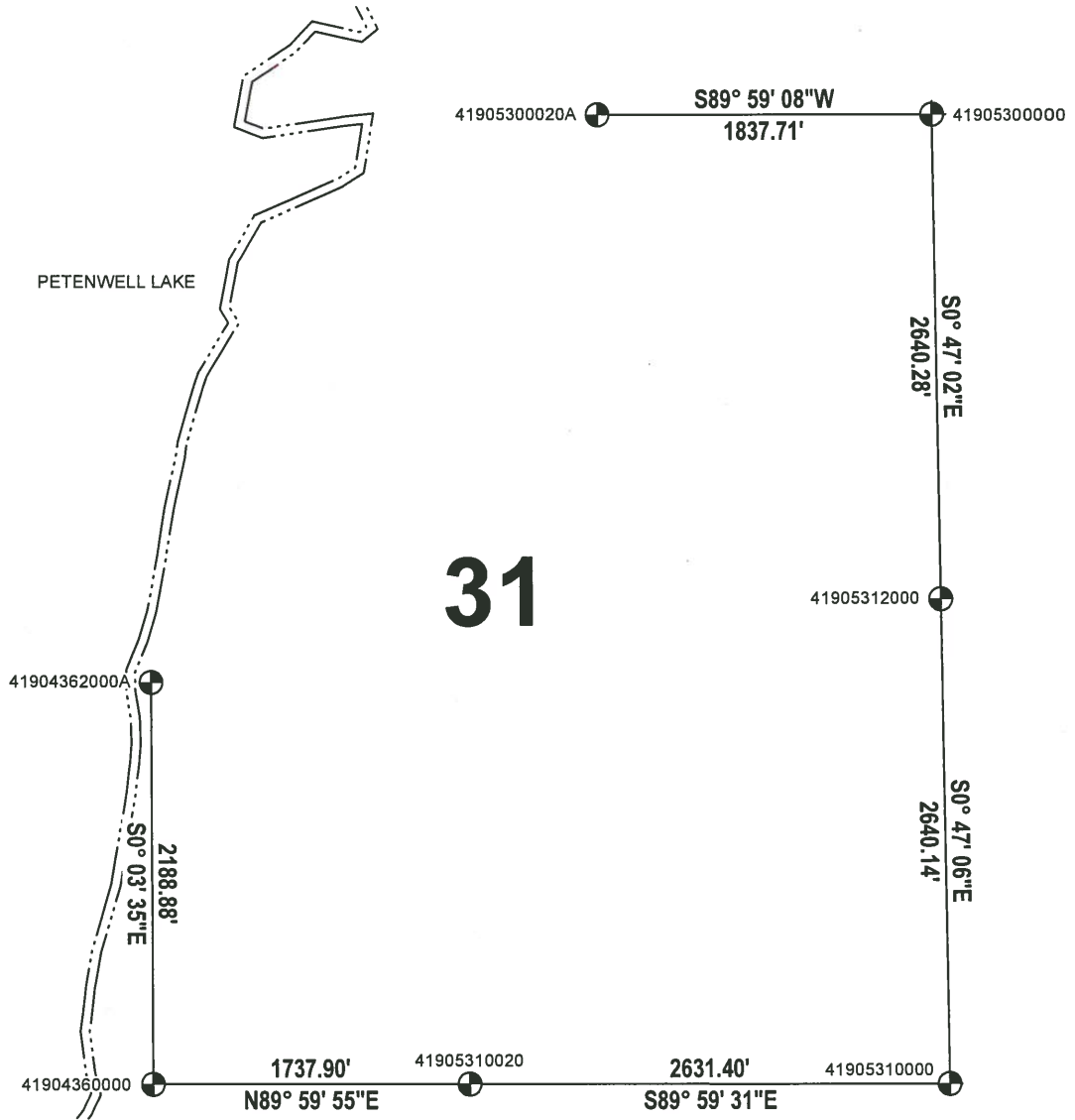
# ADAMS COUNTY

## SECTION SUMMARY

SECTION: 31  
 TOWNSHIP: 19  
 RANGE: 05

**MONROE**  
 CITY-VILLAGE TOWN

THIS MAP IS TO BE USED FOR REFERENCE ONLY. ADAMS COUNTY ASSUMES NO LEGAL RESPONSIBILITY FOR THE ACCURACY OF THE INFORMATION CONTAINED HEREIN.



ADAMS COUNTY COORDINATE SYSTEM NAD83 (2007)			
NUMBER	NORTHING	EASTING	DESCRIPTION
41905310000	255797.775	499106.251	HARRISON BROKEN TOP
41905310020	255798.139	496474.847	HARRISON BROKEN TOP
41905300000	261077.703	499033.960	HARRISON
41905312000	258437.666	499070.081	HARRISON BROKEN TOP
41904360000	255798.096	494736.947	HARRISON BROKEN TOP
41905300020A	261077.240	497196.248	2-3/8" O.D. IRON PIPE W/ALUMINUM CAP
41904362000A	257986.973	494734.663	2-3/8" O.D. IRON PIPE W/ALUMINUM CAP

