



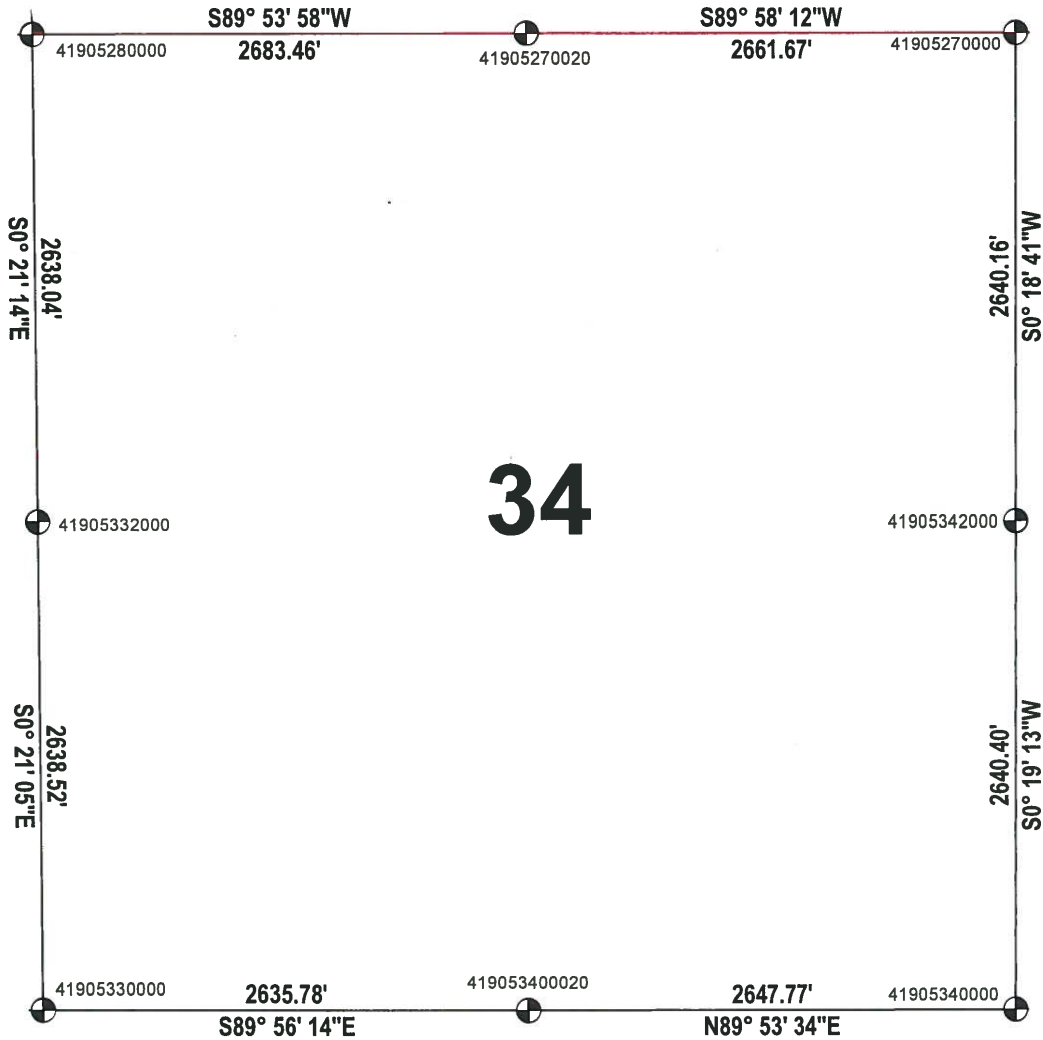
ADAMS COUNTY

SECTION SUMMARY

SECTION: 34
 TOWNSHIP: 19
 RANGE: 05

THIS MAP IS TO BE USED FOR REFERENCE ONLY. ADAMS COUNTY ASSUMES NO LEGAL RESPONSIBILITY FOR THE ACCURACY OF THE INFORMATION CONTAINED HEREIN.

MONROE
 CITY, VILLAGE, TOWN



34

ADAMS COUNTY COORIDINATE SYSTEM NAD83 (2007)			
NUMBER	NORTHING	EASTING	DESCRIPTION
41905330000	255799.674	509690.159	HARRISON
41905340000	255801.744	514973.696	HARRISON BROKEN TOP
41905340020	255796.789	512325.935	HARRISON
41905270000	261082.228	515002.806	HARRISON
41905270020	261080.839	512341.135	HARRISON
41905280000	261076.126	509657.678	HARRISON
41906342000	258442.106	514988.456	HARRISON BROKEN TOP
41905332000	258438.140	509673.971	HARRISON

