

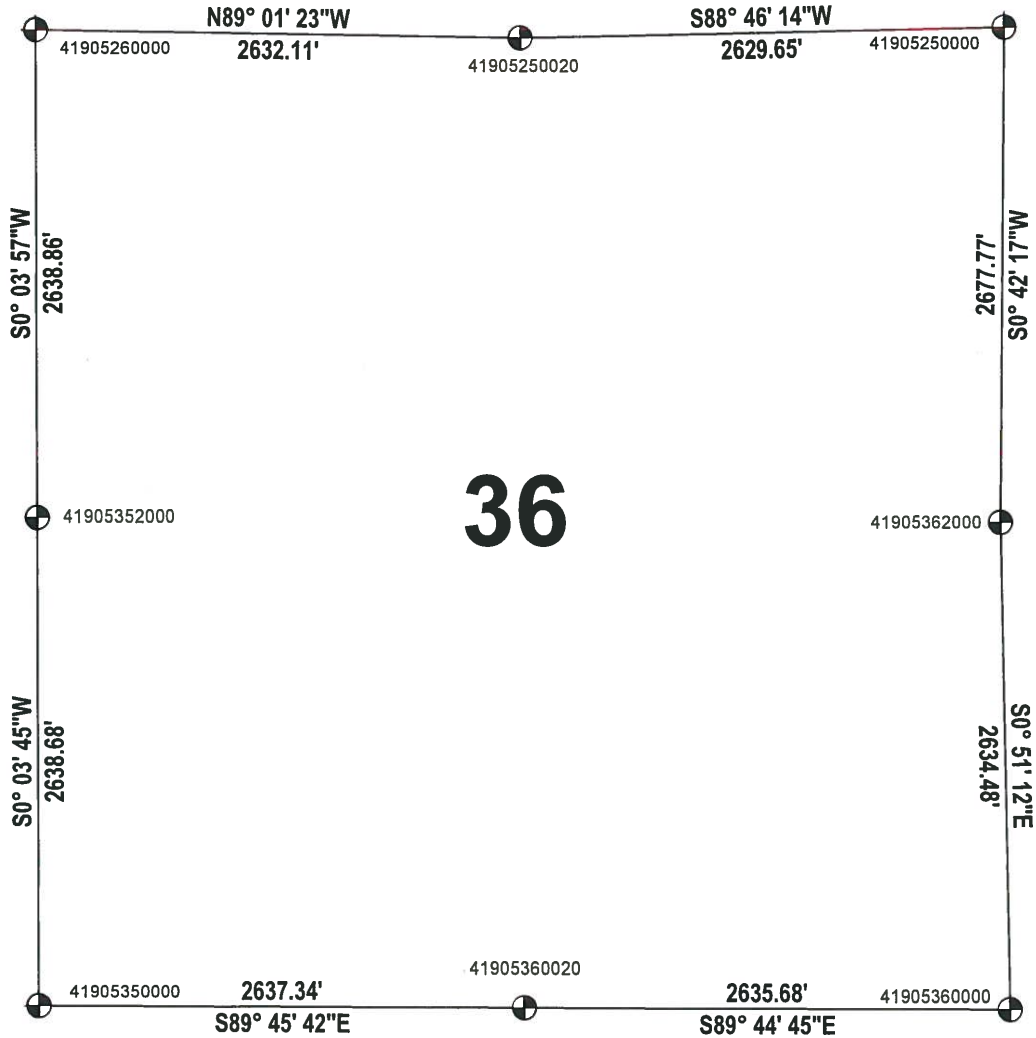
ADAMS COUNTY

SECTION SUMMARY

SECTION: 36
 TOWNSHIP: 19
 RANGE: 05

THIS MAP IS TO BE USED FOR REFERENCE ONLY. ADAMS COUNTY ASSUMES NO LEGAL RESPONSIBILITY FOR THE ACCURACY OF THE INFORMATION CONTAINED HEREIN.

MONROE
 CITY-VILLAGE, TOWN



36

ADAMS COUNTY COORDINATE SYSTEM NAD83 (2007)			
NUMBER	NORTHING	EASTING	DESCRIPTION
41905250000	261101.069	525536.225	HARRISON BROKEN TOP
41905350000	255811.987	520269.548	HARRISON
41905360000	255789.320	525542.528	HARRISON
41905360020	255801.012	522906.870	HARRISON
41905362000	258423.503	525503.289	HARRISON
41905250020	261044.647	522907.178	HARRISON
41905260000	261089.525	520275.450	HARRISON
41905352000	258450.666	520272.421	HARRISON

