



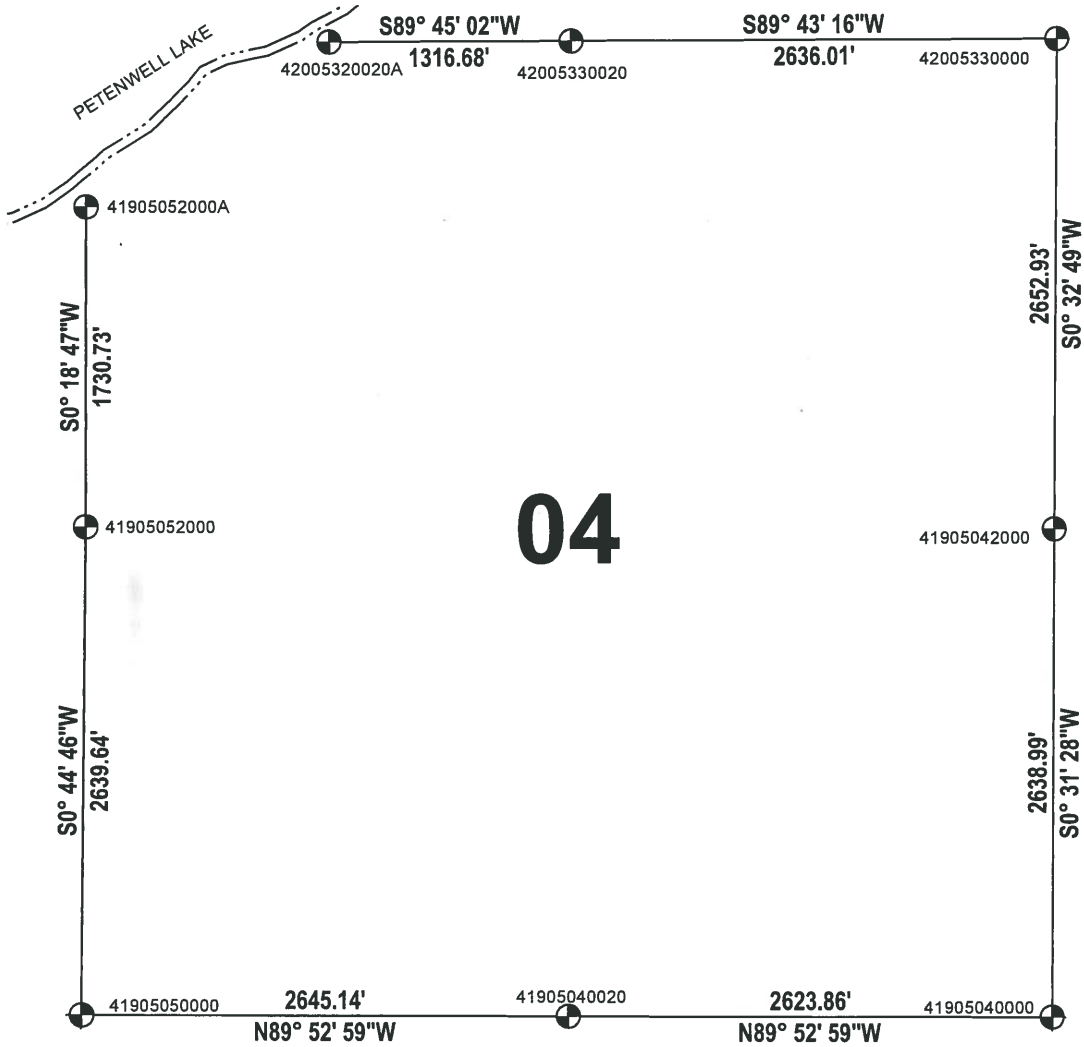
ADAMS COUNTY

SECTION SUMMARY

SECTION: 04
 TOWNSHIP: 19
 RANGE: 05

MONROE
 CITY-VILLAGE, TOWN

THIS MAP IS TO BE USED FOR REFERENCE ONLY. ADAMS COUNTY ASSUMES NO LEGAL RESPONSIBILITY FOR THE ACCURACY OF THE INFORMATION CONTAINED HEREIN.



ADAMS COUNTY COORDINATE SYSTEM NAD83 (2007)			
NUMBER	NORTHING	EASTING	DESCRIPTION
42005330000	287521.940	509722.715	HARRISON BROKEN TOP
41905040000	282230.243	509673.237	HARRISON BROKEN TOP
41905052000	284880.412	504438.621	HARRISON
41905042000	284869.127	509697.386	HARRISON BROKEN TOP
41905050000	282240.999	504404.249	HARRISON BROKEN TOP
41905040020	282235.600	507049.385	SURVEY NAIL
42005330020	287509.111	507086.736	HARRISON BROKEN TOP
41905052000A	286611.119	504448.078	2-3/8" O.D. IRON PIPE W/ALUMINUM CAP
42005320020A	287503.377	505770.071	ADAMS CO. MONUMNET W/ ALUMINUM CAP

