



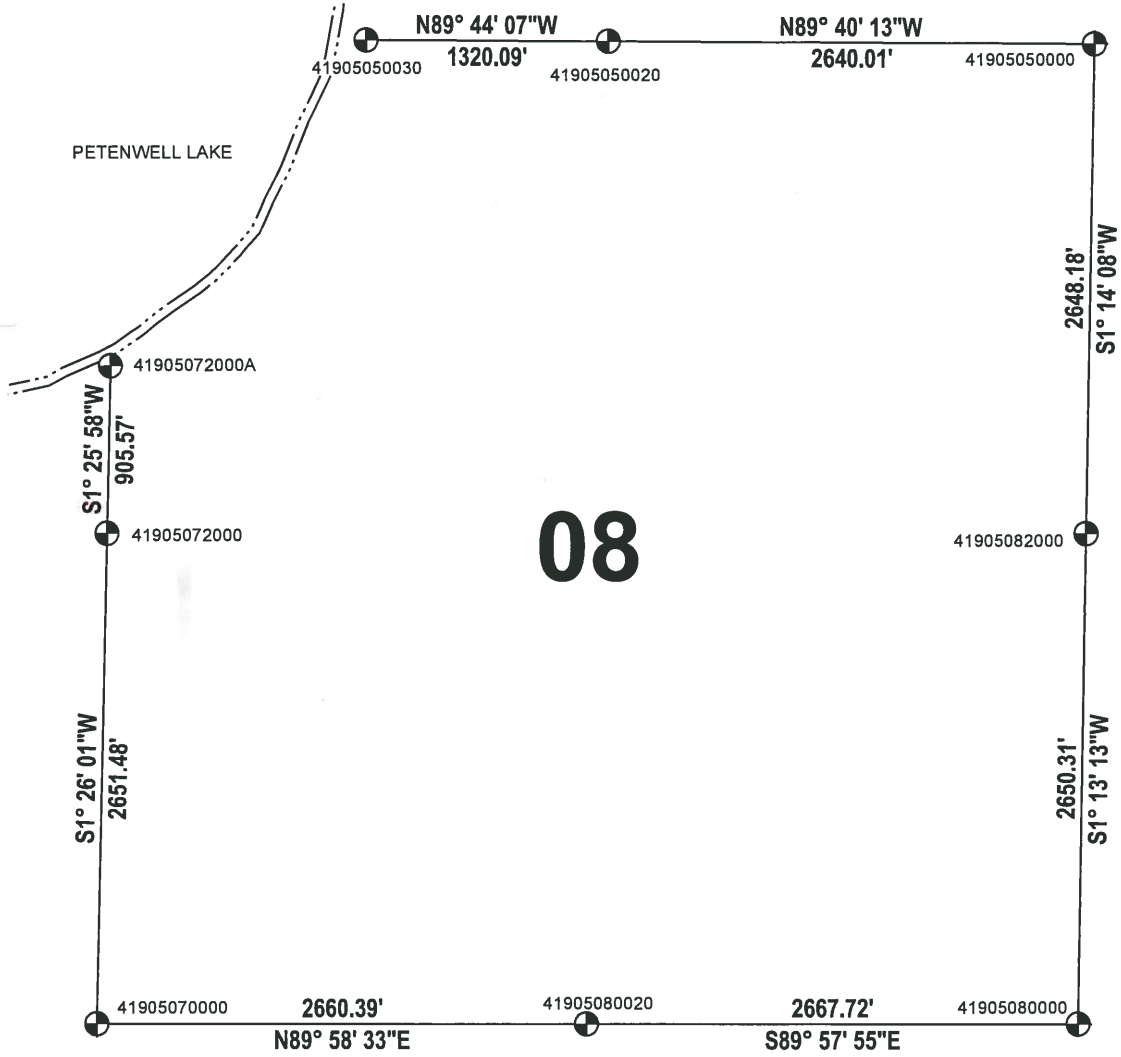
ADAMS COUNTY

SECTION SUMMARY

SECTION: 08
 TOWNSHIP: 19
 RANGE: 05

MONROE
 CITY, VILLAGE, TOWN

THIS MAP IS TO BE USED FOR REFERENCE ONLY. ADAMS COUNTY ASSUMES NO LEGAL RESPONSIBILITY FOR THE ACCURACY OF THE INFORMATION CONTAINED HEREIN.



08

ADAMS COUNTY COORDINATE SYSTEM NAD83 (2007)			
NUMBER	NORTHING	EASTING	DESCRIPTION
41905050020	282256.190	501764.285	HARRISON
41905050030	282262.286	500444.208	1-1/4" O.D. IRON PIPE
41905082000	279593.437	504347.151	HARRISON
41905080000	276943.730	504290.709	HARRISON
41905080020	276945.351	501622.992	HARRISON
41905072000	279594.883	499028.939	HARRISON
41905070000	276944.232	498962.598	HARRISON
41905050000	282240.999	504404.249	HARRISON BROKEN TOP
41905072000A	280500.168	499051.582	2-3/8" O.D. IRON PIPE W/ALUMINUM CAP

